

Commercial Cabinets Direct

PRODUCT LINE BROCHURE

January 22, 2020

W1DL-CRN/W1DR-CRN

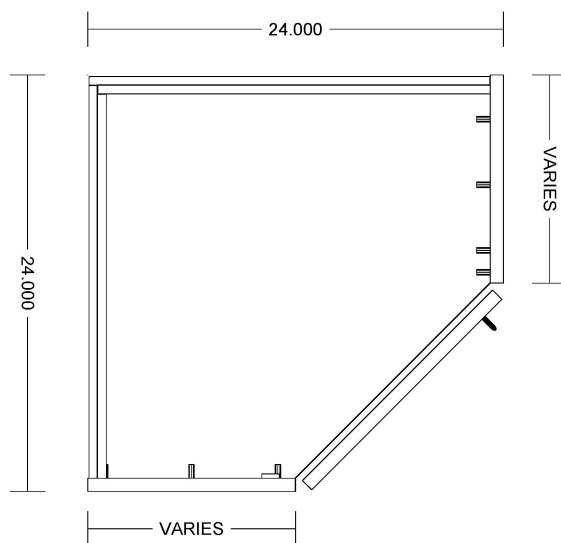


Left Hand Hinge



Right Hand Hinge

Single door wall cabinet with
45 degree door
for corner application



TYPICAL: W1DL-CRN-1AS-M
W1DR-CRN-1AS-M

Laminate cabinets are available in a wide range of standard features and options. Additionally, custom configurations are possible. The website supports many of the features needed to quote and order commercial grade laminate or melamine products. The best value is made available by selecting from the standard features listed below (Default settings in the configurator)

Standard door

Left hand hinge
Right hand hinge

Standard Sizes

Width ranges 24" to 30" (Cabinet depths will be adjusted to match adjoining cabinets)
Height ranges 12" to 48"
Depth ranges 24" to 30" (Cabinet depths will be adjusted to match adjoining cabinets)

Standard features

Unfinished Sides - ¾" white melamine
Finished Sides - ¾" HPL exterior, white liner interior
Finished bottom - ¾" HPL exterior, white liner interior
Unfinished top - ¾" white melamine
Unfinished back - ½" white melamine (Dado in sides)
Unfinished shelves - ¾" white melamine (Less than 27" wide)
Unfinished shelves - 1" white melamine (27" and wider)
Doors - ¾" HPL exterior, white liner interior
Cabinet edgeband - .018 PVC
Door edgeband - .018 PVC or 3mm PVC

Standard Hardware

Hinges - 120 degree Blum Hinge (45 degree corner hinge)
Pull - 4" satin chrome wire pull
Shelf Clips - 5mm metal spoon

Standard Options

Finished ends - ¾" HPL exterior, white liner interior
Light Rails - ¾" HPL strip, shipped loose for field installation. (Light rail butts finished ends. Cabinet Height does not include the height of the light rail)

Custom Options

Hang rails - ¾" plywood "French Cleats". Wall cleat shipped loose for field installation.
Locks - Choice of lock and key options
Finished Interiors - ¾" HPL interiors with either white liner exterior or matching HPL exteriors, determined by finished end selection.

Accessory Options

See Accessory list which include Hardware, Components and Operations.

W1DL-BLD / W1DR-BLD

Fixed Panel

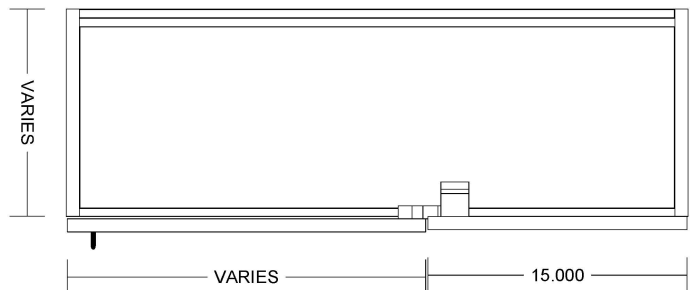
Fixed Panel



Left Hand Hinge

Right Hand Hinge

Single door with fixed panel
for corner application



TYPICAL: W1DL-BLD-1AS-M
W1DR-BLD-1AS-M

Laminate cabinets are available in a wide range of standard features and options. Additionally, custom configurations are possible. The website supports many of the features needed to quote and order commercial grade laminate or melamine products. The best value is made available by selecting from the standard features listed below (Default settings in the configurator)

Standard door

Left hand hinge
Right hand hinge

Standard Sizes

Width ranges 24" to 45"
Height ranges 12" to 48"
Depth ranges 9" to 24"

Standard features

Unfinished Sides - 3/4" white melamine
Finished Sides - 3/4" HPL exterior, white liner interior
Finished bottom - 3/4" HPL exterior, white liner interior
Unfinished top - 3/4" white melamine
Unfinished back - 1/2" white melamine (Dado in sides)
Unfinished shelves - 3/4" white melamine (Less than 27" wide)
Unfinished shelves - 1" white melamine (27" and wider)
Doors - 3/4" HPL exterior, white liner interior
Cabinet edgeband - .018 PVC
Door edgeband - .018 PVC or 3mm PVC

Standard Hardware

Hinges - 120 degree Blum Hinge (Blind panel hinge)
Pull - 4" satin chrome wire pull
Shelf Clips - 5mm metal spoon

Standard Options

Finished ends - 3/4" HPL exterior, white liner interior
Light Rails - 3/4" HPL strip, shipped loose for field installation. (Light rail butts finished ends. Cabinet Height does not include the height of the light rail)

Custom Options

Hang rails - 3/4" plywood "French Cleats". Wall cleat shipped loose for field installation.
Locks - Choice of lock and key options
Finished Interiors - 3/4" HPL interiors with either white liner exterior or matching HPL exteriors, determined by finished end selection.

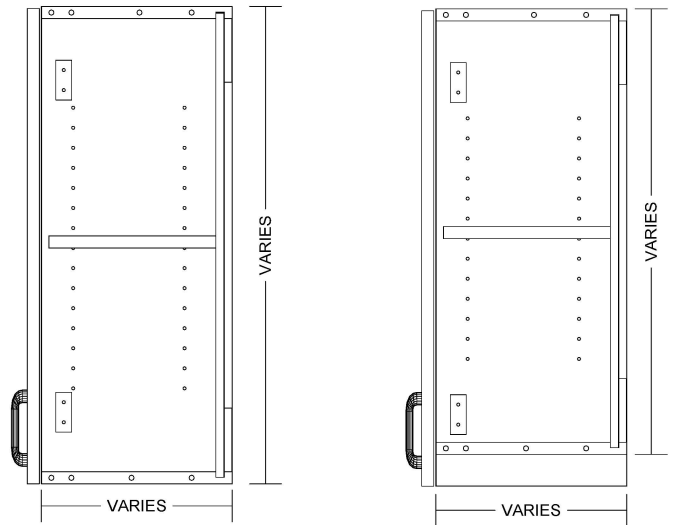
Accessory Options

See Accessory list which include Hardware, Components and Operations.

W2D



Double door wall cabinet



TYPICAL: W2D-1AS-M
WITH & W/OUT LIGHT RAIL APPLICATIONS

Laminate cabinets are available in a wide range of standard features and options. Additionally, custom configurations are possible. The website supports many of the features needed to quote and order commercial grade laminate or melamine products. The best value is made available by selecting from the standard features listed below (Default settings in the configurator)

Standard door

Hinged in Pairs

Standard Sizes

Width ranges 18" to 39"
Height ranges 12" to 48"
Depth ranges 9" to 24"

Standard features

Unfinished Sides - $\frac{3}{4}$ " white melamine
Finished Sides - $\frac{3}{4}$ " HPL exterior, white liner interior
Finished bottom - $\frac{3}{4}$ " HPL exterior, white liner interior
Unfinished top - $\frac{3}{4}$ " white melamine
Unfinished back - $\frac{1}{2}$ " white melamine (Dado in sides)
Unfinished shelves - $\frac{3}{4}$ " white melamine (Less than 27" wide)
Unfinished shelves - 1" white melamine (27" and wider)
Doors - $\frac{3}{4}$ " HPL exterior, white liner interior
Cabinet edgeband - .018 PVC
Door edgeband - .018 PVC or 3mm PVC

Standard Hardware

Hinges - 120 degree Blum Hinge
Pull - 4" satin chrome wire pull
Shelf Clips - 5mm metal spoon

Standard Options

Finished ends - $\frac{3}{4}$ " HPL exterior, white liner interior
Light Rails - $\frac{3}{4}$ " HPL strip, shipped loose for field installation. (Light rail butts finished ends. Cabinet Height does not include the height of the light rail)

Custom Options

Hang rails - $\frac{3}{4}$ " plywood "French Cleats". Wall cleat shipped loose for field installation.
Locks - Choice of lock and key options
Finished Interiors - $\frac{3}{4}$ " HPL interiors with either white liner exterior or matching HPL exteriors, determined by finished end selection.

Accessory Options

See Accessory list which include Hardware, Components and Operations.

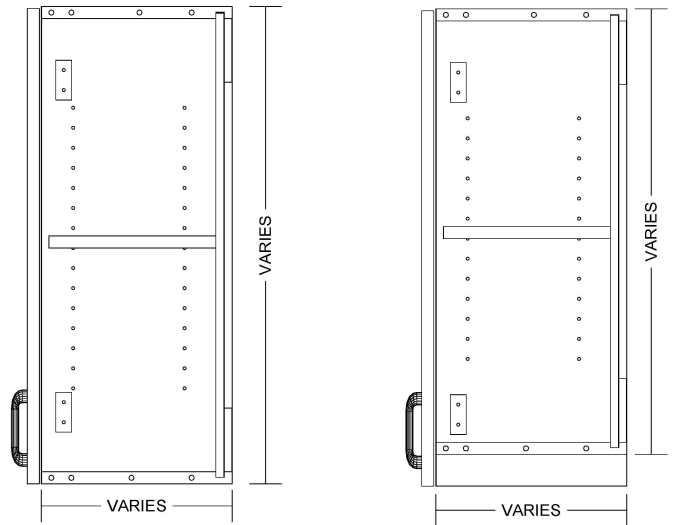
W1DL / W1DR



Left Hand Hinge

Right Hand Hinge

Single door wall cabinet



TYPICAL: W1DL-1AS-M
W1DR-1AS-M
WITH & W/OUT LIGHT RAIL APPLICATIONS

Laminate cabinets are available in a wide range of standard features and options. Additionally, custom configurations are possible. The website supports many of the features needed to quote and order commercial grade laminate or melamine products. The best value is made available by selecting from the standard features listed below (Default settings in the configurator)

Standard door

Left hand hinge
Right hand hinge

Standard Sizes

Width ranges 9" to 24"
Height ranges 12" to 48"
Depth ranges 9" to 24"

Standard features

Unfinished Sides - ¾" white melamine
Finished Sides - ¾" HPL exterior, white liner interior
Finished bottom - ¾" HPL exterior, white liner interior
Unfinished top - ¾" white melamine
Unfinished back - ½" white melamine (Dado in sides)
Unfinished shelves - ¾" white melamine (Less than 27" wide)
Unfinished shelves - 1" white melamine (27" and wider)
Doors - ¾" HPL exterior, white liner interior
Cabinet edgeband - .018 PVC
Door edgeband - .018 PVC or 3mm PVC

Standard Hardware

Hinges - 120 degree Blum Hinge
Pull - 4" satin chrome wire pull
Shelf Clips - 5mm metal spoon

Standard Options

Finished ends - ¾" HPL exterior, white liner interior
Light Rails - ¾" HPL strip, shipped loose for field installation. (Light rail butts finished ends. Cabinet Height does not include the height of the light rail)

Custom Options

Hang rails - ¾" plywood "French Cleats". Wall cleat shipped loose for field installation.
Locks - Choice of lock and key options
Finished Interiors - ¾" HPL interiors with either white liner exterior or matching HPL exteriors, determined by finished end selection.

Accessory Options

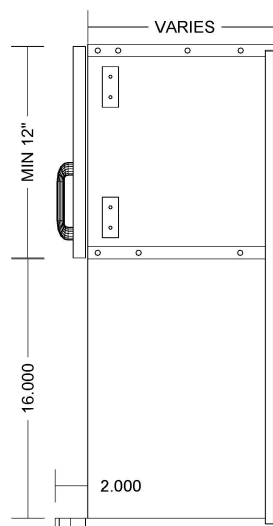
See Accessory list which include Hardware, Components and Operations.

W2D-MW



Radius Corner

Double door wall cabinet
with microwave space



TYPICAL: W2D-MW-0AS-L-B2
NO LIGHT RAIL APPLICATIONS

Laminate cabinets are available in a wide range of standard features and options. Additionally, custom configurations are possible. The website supports many of the features needed to quote and order commercial grade laminate or melamine products. The best value is made available by selecting from the standard features listed below (Default settings in the configurator)

Standard door

Hinged in Pairs

Standard Sizes

Width ranges 18" to 39"
Height ranges 12" to 48"
Depth ranges 9" to 24"

Standard features

Unfinished Sides - 3/4" HPL Interior, white liner exterior
Finished Sides - 3/4" HPL exterior, HPL interior
Finished bottom - 3/4" HPL exterior, HPL interior (Radius corner on extended bottom)
Unfinished top - 3/4" HPL Interior, white liner exterior
Unfinished back - 1/2" HPL interior, white liner exterior
Unfinished shelves - 3/4" white melamine (Less than 27" wide)
Unfinished shelves - 1" white melamine (27" and wider)
Doors - 3/4" HPL exterior, white liner interior
Cabinet edgeband - .018 PVC
Door edgeband - .018 PVC or 3mm PVC

Standard Hardware

Hinges - 120 degree Blum Hinge
Pull - 4" satin chrome wire pull
Shelf Clips - 5mm metal spoon

Standard Options

Finished ends - 3/4" HPL exterior, HPL interior
Light Rails - Light rails are not recommended for this cabinet

Custom Options

Hang rails - 3/4" plywood "French Cleats". Wall cleat shipped loose for field installation.
Locks - Choice of lock and key options
Finished Interiors are standard because of the exposed open area. Please unselect FI if white melamine is desired

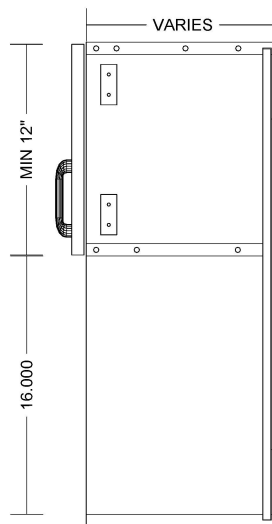
Accessory Options

See Accessory list which include Hardware, Components and Operations.

W2D-BO



Double door wall cabinet
with open shelf space



TYPICAL: W2D-BOPEN-0AS-TB -L
NO LIGHT RAIL APPLICATIONS

Laminate cabinets are available in a wide range of standard features and options. Additionally, custom configurations are possible. The website supports many of the features needed to quote and order commercial grade laminate or melamine products. The best value is made available by selecting from the standard features listed below (Default settings in the configurator)

Standard door

Hinged in Pairs

Standard Sizes

Width ranges 18" to 39"
Height ranges 12" to 48"
Depth ranges 9" to 24"

Standard features

Unfinished Sides - 3/4" HPL Interior, white liner exterior
Finished Sides - 3/4" HPL exterior, HPL interior
Finished bottom - 3/4" HPL exterior, HPL interior
Unfinished top - 3/4" HPL Interior, white liner exterior
Unfinished back - 1/2" HPL interior, white liner exterior
Unfinished shelves - 3/4" white melamine (Less than 27" wide)
Unfinished shelves - 1" white melamine (27" and wider)
Doors - 3/4" HPL exterior, white liner interior
Cabinet edgeband - .018 PVC
Door edgeband - .018 PVC or 3mm PVC

Standard Hardware

Hinges - 120 degree Blum Hinge
Pull - 4" satin chrome wire pull
Shelf Clips - 5mm metal spoon

Standard Options

Finished ends - 3/4" HPL exterior, HPL interior
Light Rails - 3/4" HPL strip, shipped loose for field installation. (Light rail butts finished ends. Cabinet Height does not include the height of the light rail)

Custom Options

Hang rails - 3/4" plywood "French Cleats". Wall cleat shipped loose for field installation.
Locks - Choice of lock and key options
Finished Interiors are standard because of the exposed open area. Please unselect FI if white melamine is desired

Accessory Options

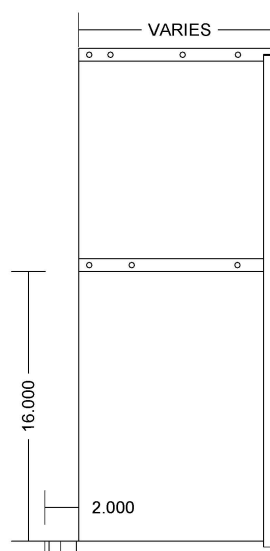
See Accessory list which include Hardware, Components and Operations.

WOPEN-MW



↑
Radius Corner

Wall open cabinet with
Microwave space



TYPICAL: WOPEN-MW-0AS-L-B2
NO LIGHT RAIL APPLICATIONS

Laminate cabinets are available in a wide range of standard features and options. Additionally, custom configurations are possible. The website supports many of the features needed to quote and order commercial grade laminate or melamine products. The best value is made available by selecting from the standard features listed below (Default settings in the configurator)

Standard door

Hinged in Pairs

Standard Sizes

Width ranges 18" to 39"
Height ranges 12" to 48"
Depth ranges 9" to 24"

Standard features

Unfinished Sides - $\frac{3}{4}$ " HPL Interior, white liner exterior
Finished Sides - $\frac{3}{4}$ " HPL exterior, HPL interior
Finished bottom - $\frac{3}{4}$ " HPL exterior, HPL interior (Radius corner on extended bottom)
Unfinished top - $\frac{3}{4}$ " HPL Interior, white liner exterior
Unfinished back - $\frac{1}{2}$ " HPL interior, white liner exterior
Unfinished shelves - $\frac{3}{4}$ " white melamine (Less than 27" wide)
Unfinished shelves - 1" white melamine (27" and wider)
Doors - None
Cabinet edgeband - .018 PVC
Door edgeband - .None

Standard Hardware

Hinges - None
Pull - None
Shelf Clips - 5mm metal spoon

Standard Options

Finished ends - $\frac{3}{4}$ " HPL exterior, HPL interior
Light Rails - Light rails are not recommended for this cabinet

Custom Options

Hang rails - $\frac{3}{4}$ " plywood "French Cleats". Wall cleat shipped loose for field installation.
Locks - None

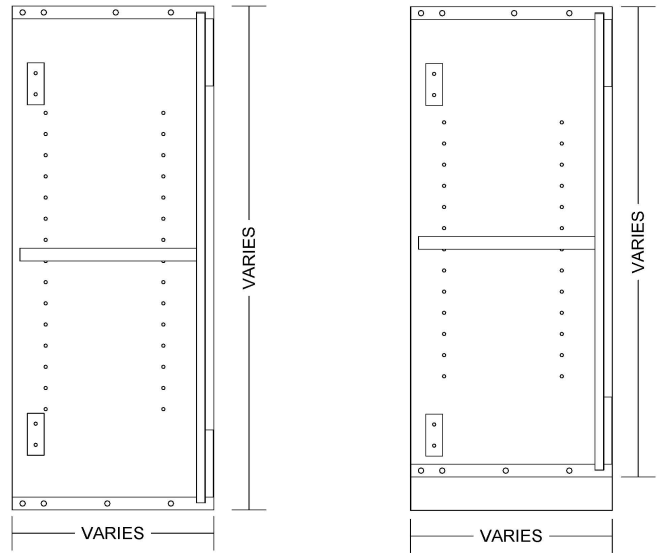
Accessory Options

Finished Interiors are standard because of the exposed open area. Please unselect FI if white melamine is desired
See Accessory list which include Hardware, Components and Operations.

WOPEN



Open wall cabinet



TYPICAL: WOPEN-1AS-L
WITH & W/OUT LIGHT RAIL APPLICATIONS

Laminate cabinets are available in a wide range of standard features and options. Additionally, custom configurations are possible. The website supports many of the features needed to quote and order commercial grade laminate or melamine products. The best value is made available by selecting from the standard features listed below (Default settings in the configurator)

Standard door

None

Standard Sizes

Width ranges 9" to 39"
Height ranges 12" to 48"
Depth ranges 9" to 24"

Standard features

Unfinished Sides - $\frac{3}{4}$ " HPL Interior, white liner exterior
Finished Sides - $\frac{3}{4}$ " HPL exterior, HPL interior
Finished bottom - $\frac{3}{4}$ " HPL exterior, HPL interior
Unfinished top - $\frac{3}{4}$ " HPL Interior, white liner exterior
Unfinished back - $\frac{1}{2}$ " HPL interior, white liner exterior
Unfinished shelves - $\frac{3}{4}$ " HPL 2 sides (Less than 27" wide)
Unfinished shelves - 1" HPL 2 sides (27" and wider)
Doors - None
Cabinet edgeband - .018 PVC
Door edgeband - .None

Standard Hardware

Hinges - None
Pull - None
Shelf Clips - 5mm metal spoon

Standard Options

Finished ends - $\frac{3}{4}$ " HPL exterior, HPL interior
Light Rails - $\frac{3}{4}$ " HPL strip, shipped loose for field installation. (Light rail butts finished ends. Cabinet Height does not include the height of the light rail)

Custom Options

Hang rails - $\frac{3}{4}$ " plywood "French Cleats". Wall cleat shipped loose for field installation.
Locks - None
Finished Interiors - Finished Interiors are standard because of the exposed open area. Please unselect FI if white melamine is desired

Accessory Options

See Accessory list which include Hardware, Components and Operations.

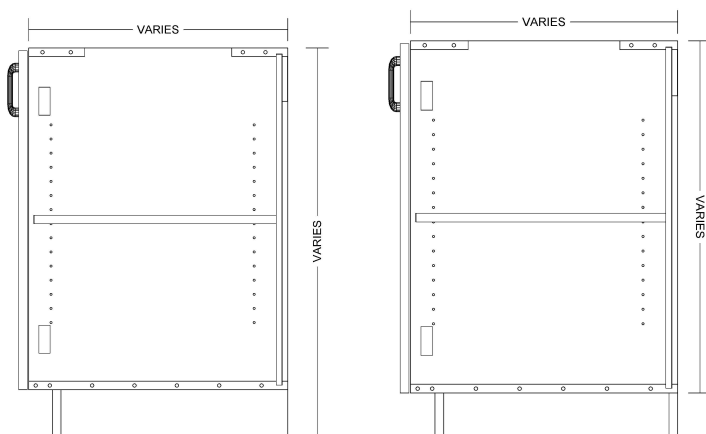
B1DL / B1DR



Left Hand Hinge

Right Hand Hinge

Base 1 door cabinet



**TYPICAL: B1DL-1AS-M
B1DR-1AS-M
INTEGRAL AND LOOSE SUBBASE APPLICATIONS**

Laminate cabinets are available in a wide range of standard features and options. Additionally, custom configurations are possible. The website supports many of the features needed to quote and order commercial grade laminate or melamine products. The best value is made available by selecting from the standard features listed below (Default settings in the configurator)

Standard door

Left hand hinge
Right hand hinge

Standard Sizes

Width ranges 9" to 24"
Height ranges 18" to 42"
Depth ranges 9" to 30"

Standard features

Unfinished Sides - 3/4" white melamine
Finished Sides - 3/4" HPL exterior, white liner interior
Unfinished bottom - 3/4" white melamine
Unfinished top stretchers - 3/4" white melamine
Unfinished back - 1/2" white melamine (Dado in sides)
Unfinished shelves - 3/4" white melamine (Less than 27" wide)
Unfinished shelves - 1" white melamine (27" and wider)
Doors - 3/4" HPL exterior, white liner interior
Cabinet edgeband - .018 PVC
Door edgeband - .018 PVC or 3mm PVC

Standard Hardware

Hinges - 120 degree Blum Hinge
Pull - 4" satin chrome wire pull
Shelf Clips - 5mm metal spoon

Standard Options

Finished ends - 3/4" HPL exterior, white liner interior

Custom Options

Sub-Bases - 3/4" plywood construction (Cabinets have a flush bottom, sub bases ordered separately)
Locks - Choice of lock and key options
Finished Interiors - 3/4" HPL interiors with either white liner exterior or matching HPL exteriors, determined by finished end selection.

Accessory Options

See Accessory list which include Hardware, Components and Operations.

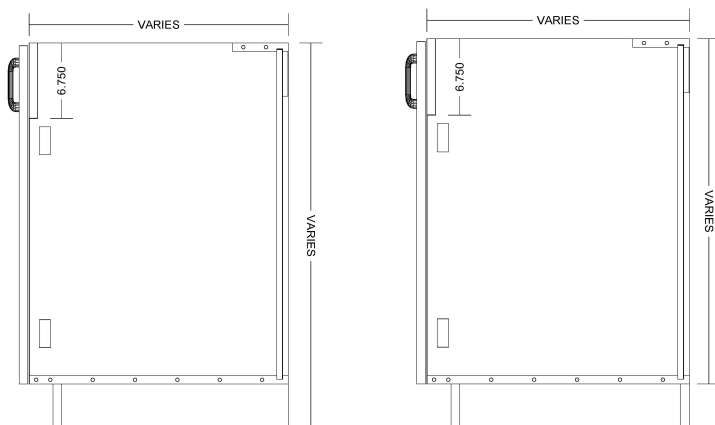
SB1DL / SB1DR



Left Hand Hinge

Right Hand Hinge

Base 1 door cabinet
with false front behind door



TYPICAL: SB1DL-0AS-M
SB1DR-0AS-M
INTEGRAL AND LOOSE SUBBASE APPLICATIONS

Laminate cabinets are available in a wide range of standard features and options. Additionally, custom configurations are possible. The website supports many of the features needed to quote and order commercial grade laminate or melamine products. The best value is made available by selecting from the standard features listed below (Default settings in the configurator)

Standard door

Left hand hinge
Right hand hinge

Standard Sizes

Width ranges 9" to 24"
Height ranges 18" to 42"
Depth ranges 9" to 30"

Standard features

Unfinished Sides - 3/4" white melamine
Finished Sides - 3/4" HPL exterior, white liner interior
Unfinished bottom - 3/4" white melamine
Unfinished top stretchers - 3/4" white melamine
Unfinished back - 1/2" white melamine (Dado in sides)
Unfinished shelves - 3/4" white melamine (Less than 27" wide)
Unfinished shelves - 1" white melamine (27" and wider)
Doors - 3/4" HPL exterior, white liner interior
Cabinet edgeband - .018 PVC
Door edgeband - .018 PVC or 3mm PVC

Standard Hardware

Hinges - 120 degree Blum Hinge
Pull - 4" satin chrome wire pull
Shelf Clips - 5mm metal spoon

Standard Options

Finished ends - 3/4" HPL exterior, white liner interior

Custom Options

Sub-Bases - 3/4" plywood construction (Cabinets have a flush bottom, sub bases ordered separately)
Locks - Choice of lock and key options
Finished Interiors - 3/4" HPL interiors with either white liner exterior or matching HPL exteriors, determined by finished end selection.

Accessory Options

See Accessory list which include Hardware, Components and Operations.

SB1DL-ATK / SB1DR-ATK

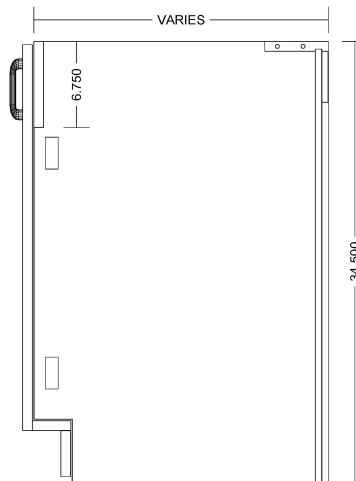


Left Hand Hinge



Right Hand Hinge

Base 1 door cabinet
with false front behind door, no
bottom, attach toe kick



TYPICAL: SB1DL-ATK-M
SB1DR-ATK-M

Laminate cabinets are available in a wide range of standard features and options. Additionally, custom configurations are possible. The website supports many of the features needed to quote and order commercial grade laminate or melamine products. The best value is made available by selecting from the standard features listed below (Default settings in the configurator)

Standard door

Left hand hinge
Right hand hinge

Standard Sizes

Width ranges 9" to 24"
Height ranges 18" to 42"
Depth ranges 9" to 30"

Standard features

Unfinished Sides - ¾" white melamine
Finished Sides - ¾" HPL exterior, white liner interior
Unfinished bottom - None
Unfinished top stretchers - ¾" white melamine
Unfinished back - ½" white melamine (Dado in sides)
Unfinished shelves - ¾" white melamine (Less than 27" wide)
Unfinished shelves - 1" white melamine (27" and wider)
Doors - ¾" HPL exterior, white liner interior
Cabinet edgeband - .018 PVC
Door edgeband - .018 PVC or 3mm PVC

Standard Hardware

Hinges - 120 degree Blum Hinge
Pull - 4" satin chrome wire pull
Shelf Clips - 5mm metal spoon

Standard Options

Finished ends - ¾" HPL exterior, white liner interior

Custom Options

Sub-Bases - None
Locks - Choice of lock and key options
Finished Interiors - ¾" HPL interiors with either white liner exterior or matching HPL exteriors, determined by finished end selection.

Accessory Options

See Accessory list which include Hardware, Components and Operations.

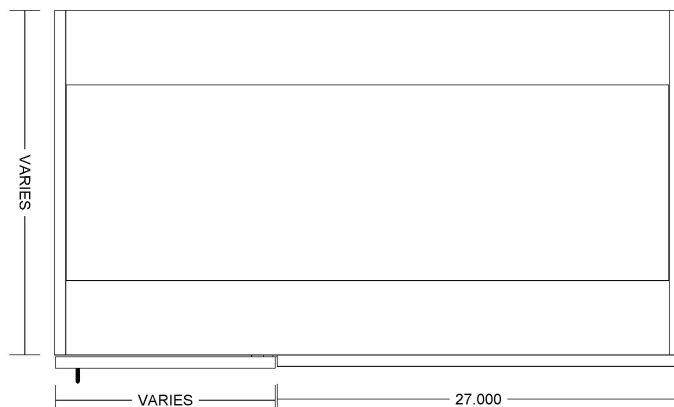
B1DL-BLD / B1DR-BLD



Left Hand Hinge

Right Hand Hinge

Base 1 door cabinet
With fixed panel for corner
applications



TYPICAL: B1DL-BLD-1AS-M
B1DR-BLD-1AS-M

Laminate cabinets are available in a wide range of standard features and options. Additionally, custom configurations are possible. The website supports many of the features needed to quote and order commercial grade laminate or melamine products. The best value is made available by selecting from the standard features listed below (Default settings in the configurator)

Standard door

Left hand hinge
Right hand hinge

Standard Sizes

Width ranges 24" to 45"
Height ranges 18" to 42"
Depth ranges 9" to 30"

Standard features

Unfinished Sides - ¾" white melamine
Finished Sides - ¾" HPL exterior, white liner interior
Unfinished bottom - ¾" white melamine
Unfinished top stretchers - ¾" white melamine
Unfinished back - ½" white melamine (Dado in sides)
Unfinished shelves - ¾" white melamine (Less than 27" wide)
Unfinished shelves - 1" white melamine (27" and wider)
Doors - ¾" HPL exterior, white liner interior
Cabinet edgeband - .018 PVC
Door edgeband - .018 PVC or 3mm PVC

Standard Hardware

Hinges - 120 degree Blum Hinge (Blind cabinet hinge)
Pull - 4" satin chrome wire pull
Shelf Clips - 5mm metal spoon

Standard Options

Finished ends - ¾" HPL exterior, white liner interior

Custom Options

Sub-Bases - ¾" plywood construction (Cabinets have a flush bottom, sub bases ordered separately)
Locks - Choice of lock and key options
Finished Interiors - ¾" HPL interiors with either white liner exterior or matching HPL exteriors, determined by finished end selection.

Accessory Options

See Accessory list which include Hardware, Components and Operations.

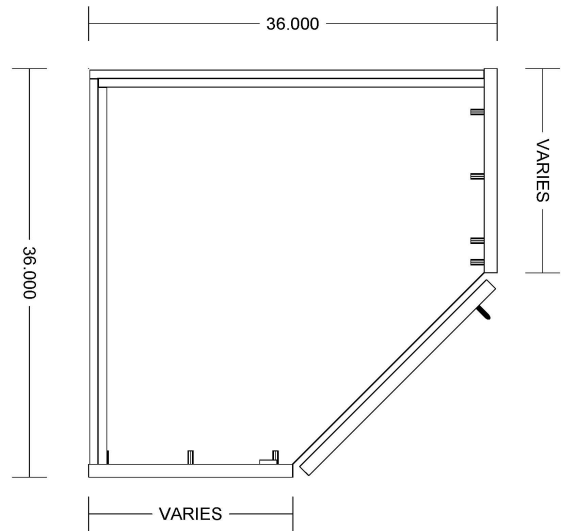
B1DL-CRN / B1DR-CRN



Left Hand Hinge

Right Hand Hinge

Base single door cabinet with
45 degree door
for corner application



TYPICAL: B1DL-CRN-1AS-M
B1DR-CRN-1AS-M

Laminate cabinets are available in a wide range of standard features and options. Additionally, custom configurations are possible. The website supports many of the features needed to quote and order commercial grade laminate or melamine products. The best value is made available by selecting from the standard features listed below (Default settings in the configurator)

Standard door

Left hand hinge
Right hand hinge

Standard Sizes

Width ranges 24" to 45"
Height ranges 18" to 42"
Depth ranges 9" to 30"

Standard features

Unfinished Sides - ¾" white melamine
Finished Sides - ¾" HPL exterior, white liner interior
Unfinished bottom - ¾" white melamine
Unfinished top stretchers - ¾" white melamine
Unfinished back - ½" white melamine (Dado in sides)
Unfinished shelves - ¾" white melamine (Less than 27" wide)
Unfinished shelves - 1" white melamine (27" and wider)
Doors - ¾" HPL exterior, white liner interior
Cabinet edgeband - .018 PVC
Door edgeband - .018 PVC or 3mm PVC

Standard Hardware

Hinges - 120 degree Blum Hinge (Blind cabinet hinge)
Pull - 4" satin chrome wire pull
Shelf Clips - 5mm metal spoon

Standard Options

Finished ends - ¾" HPL exterior, white liner interior

Custom Options

Sub-Bases - ¾" plywood construction (Cabinets have a flush bottom, sub bases ordered separately)
Locks - Choice of lock and key options
Finished Interiors - ¾" HPL interiors with either white liner exterior or matching HPL exteriors, determined by finished end selection.

Accessory Options

See Accessory list which include Hardware, Components and Operations.

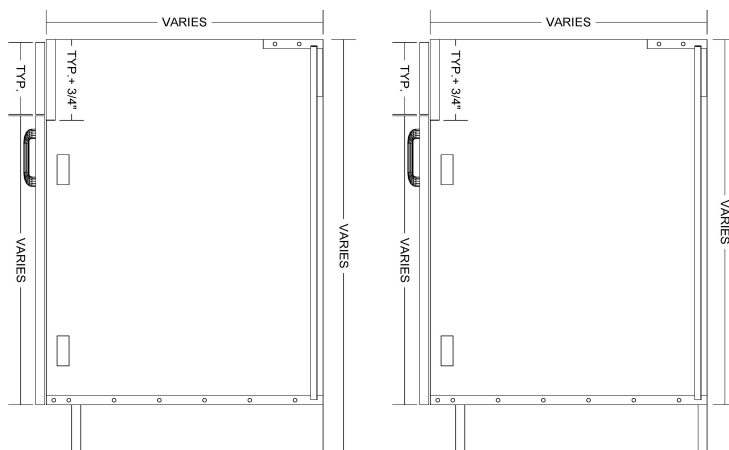
SB1D1FL / SB1D1FR



Left Hand Hinge

Right Hand Hinge

Base 1 door, 1 false front cabinet
Typical top false front 6" high



TYPICAL: SB1D1FL-0AS-M
SB1DR1F-0AS-M
INTEGRAL AND LOOSE SUBBASE APPLICATIONS

Laminate cabinets are available in a wide range of standard features and options. Additionally, custom configurations are possible. The website supports many of the features needed to quote and order commercial grade laminate or melamine products. The best value is made available by selecting from the standard features listed below (Default settings in the configurator)

Standard door

Left hand hinge
Right hand hinge

Standard Sizes

Width ranges 9" to 24"
Height ranges 18" to 42"
Depth ranges 9" to 30"

Standard features

Unfinished Sides - 3/4" white melamine
Finished Sides - 3/4" HPL exterior, white liner interior
Unfinished bottom - 3/4" white melamine
Unfinished top stretchers - 3/4" white melamine
Unfinished back - 1/2" white melamine (Dado in sides)
Unfinished shelves - 3/4" white melamine (Less than 27" wide)
Unfinished shelves - 1" white melamine (27" and wider)
Doors - 3/4" HPL exterior, white liner interior
Cabinet edgeband - .018 PVC
Door edgeband - .018 PVC or 3mm PVC

Standard Hardware

Hinges - 120 degree Blum Hinge
Pull - 4" satin chrome wire pull
Shelf Clips - 5mm metal spoon

Standard Options

Finished ends - 3/4" HPL exterior, white liner interior

Custom Options

Sub-Bases - 3/4" plywood construction (Cabinets have a flush bottom, sub bases ordered separately)
Locks - Choice of lock and key options
Finished Interiors - 3/4" HPL interiors with either white liner exterior or matching HPL exteriors, determined by finished end selection.

Accessory Options

See Accessory list which include Hardware, Components and Operations.

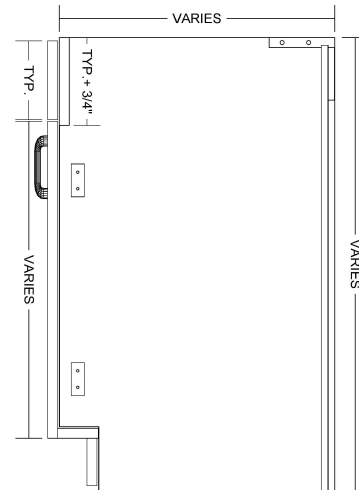
SB1D1FL-ATK / SB1D1FR-ATK



Left Hand Hinge

Right Hand Hinge

Base 1 door, 1 false front cabinet,
no bottom, attach toe kick
Typical top false front 6" high



TYPICAL: SB1D1FL-ATK-M
SB1D1FR-ATK-M

Laminate cabinets are available in a wide range of standard features and options. Additionally, custom configurations are possible. The website supports many of the features needed to quote and order commercial grade laminate or melamine products. The best value is made available by selecting from the standard features listed below (Default settings in the configurator)

Standard door

Left hand hinge
Right hand hinge

Standard Sizes

Width ranges 9" to 24"
Height ranges 18" to 42"
Depth ranges 9" to 30"

Standard features

Unfinished Sides - 3/4" white melamine
Finished Sides - 3/4" HPL exterior, white liner interior
Unfinished bottom - None
Unfinished top stretchers - 3/4" white melamine
Unfinished back - 1/2" white melamine (Dado in sides)
Unfinished shelves - 3/4" white melamine (Less than 27" wide)
Unfinished shelves - 1" white melamine (27" and wider)
Doors - 3/4" HPL exterior, white liner interior
Cabinet edgeband - .018 PVC
Door edgeband - .018 PVC or 3mm PVC

Standard Hardware

Hinges - 120 degree Blum Hinge
Pull - 4" satin chrome wire pull
Shelf Clips - 5mm metal spoon

Standard Options

Finished ends - 3/4" HPL exterior, white liner interior

Custom Options

Sub-Bases - None
Locks - Choice of lock and key options
Finished Interiors - 3/4" HPL interiors with either white liner exterior or matching HPL exteriors, determined by finished end selection.

Accessory Options

See Accessory list which include Hardware, Components and Operations.

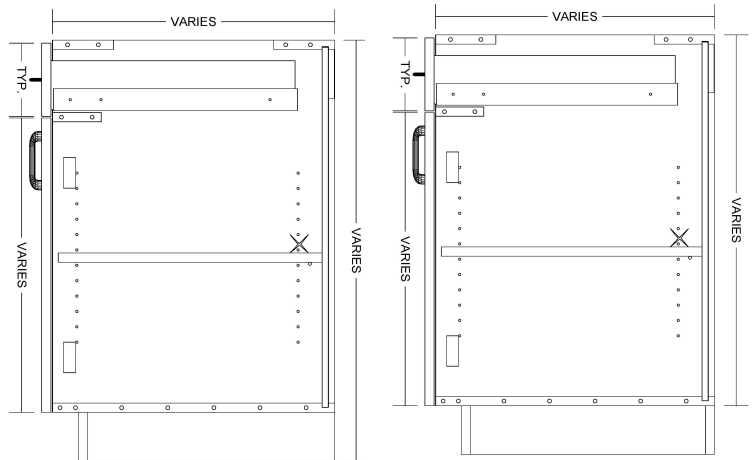
B1D1DL / B1D1DR



Left Hand Hinge

Right Hand Hinge

Base 1 door, 1 drawer cabinet
Typical top drawer front 6" high



TYPICAL: B1D1DL-1AS-M
B1DR1R-1AS-M
INTEGRAL AND LOOSE SUBBASE APPLICATIONS

Laminate cabinets are available in a wide range of standard features and options. Additionally, custom configurations are possible. The website supports many of the features needed to quote and order commercial grade laminate or melamine products. The best value is made available by selecting from the standard features listed below (Default settings in the configurator)

Standard door

Left hand hinge
Right hand hinge

Standard Sizes

Width ranges 9" to 24"
Height ranges 18" to 42"
Depth ranges 9" to 30"

Standard features

Unfinished Sides - 3/4" white melamine
Finished Sides - 3/4" HPL exterior, white liner interior
Unfinished bottom - 3/4" white melamine
Unfinished top stretchers - 3/4" white melamine
Unfinished back - 1/2" white melamine (Dado in sides)
Unfinished shelves - 3/4" white melamine (Less than 27" wide)
Unfinished shelves - 1" white melamine (27" and wider)
Door and Drawer front - 3/4" HPL exterior, white liner interior
Cabinet edgeband - .018 PVC
Door and Drawer front edgeband - .018 PVC or 3mm PVC
Drawer Box - 1/2" white melamine

Standard Hardware

Hinges - 120 degree Blum Hinge
Drawer Slide - FR5000 Fuller full extension ball bearing (100 lb.)
Pull - 4" satin chrome wire pull
Shelf Clips - 5mm metal spoon

Standard Options

Finished ends - 3/4" HPL exterior, white liner interior

Custom Options

Sub-Bases - 3/4" plywood construction (Cabinets have a flush bottom, sub bases ordered separately)
Locks - Choice of lock and key options
Finished Interiors - 3/4" HPL interiors with either white liner exterior or matching HPL exteriors, determined by finished end selection.

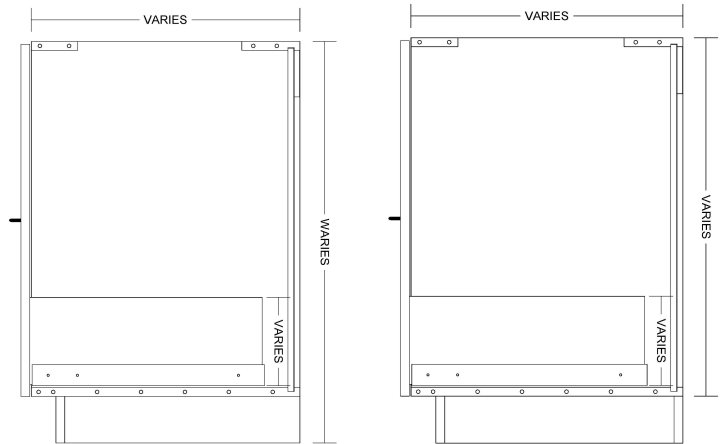
Accessory Options

See Accessory list which include Hardware, Components and Operations.

B0D1D



Base 1 drawer cabinet



TYPICAL: B0D1D-M
INTEGRAL AND LOOSE SUBBASE APPLICATIONS

Laminate cabinets are available in a wide range of standard features and options. Additionally, custom configurations are possible. The website supports many of the features needed to quote and order commercial grade laminate or melamine products. The best value is made available by selecting from the standard features listed below (Default settings in the configurator)

Standard door

None

Standard Sizes

Width ranges 9" to 30"
Height ranges 18" to 42"
Depth ranges 9" to 30"

Standard features

Unfinished Sides - $\frac{3}{4}$ " white melamine
Finished Sides - $\frac{3}{4}$ " HPL exterior, white liner interior
Unfinished bottom - $\frac{3}{4}$ " white melamine
Unfinished top stretchers - $\frac{3}{4}$ " white melamine
Unfinished back - $\frac{1}{2}$ " white melamine (Dado in sides)
Unfinished shelves - None
Unfinished shelves - None
Drawer front - $\frac{3}{4}$ " HPL exterior, white liner interior
Cabinet edgeband - .018 PVC
Drawer front edgeband - .018 PVC or 3mm PVC
Drawer Box - $\frac{1}{2}$ " white melamine

Standard Hardware

Hinges - None
Drawer Slide - FR5000 Fuller full extension ball bearing (100 lb.)
Pull - 4" satin chrome wire pull
Shelf Clips - None

Standard Options

Finished ends - $\frac{3}{4}$ " HPL exterior, white liner interior

Custom Options

Sub-Bases - $\frac{3}{4}$ " plywood construction (Cabinets have a flush bottom, sub bases ordered separately)
Locks - Choice of lock and key options
Finished Interiors - $\frac{3}{4}$ " HPL interiors with either white liner exterior or matching HPL exteriors, determined by finished end selection.

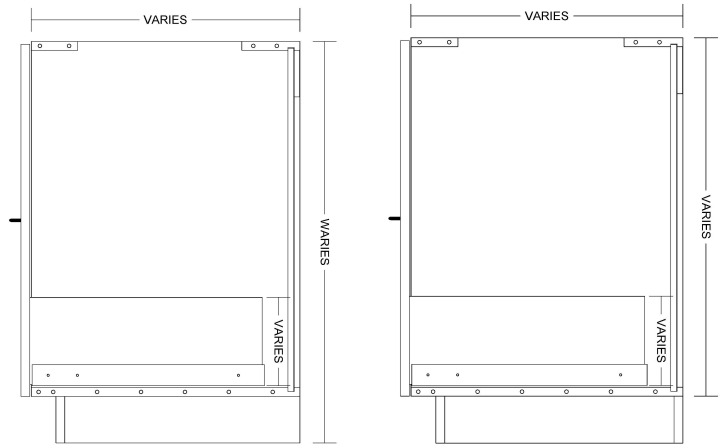
Accessory Options

See Accessory list which include Hardware, Components and Operations.

B0D1D-TRASH



Base 1 drawer cabinet,
Trash Bin behind door



TYPICAL: B0D1D-M-TRASH
INTEGRAL AND LOOSE SUBBASE APPLICATIONS

Laminate cabinets are available in a wide range of standard features and options. Additionally, custom configurations are possible. The website supports many of the features needed to quote and order commercial grade laminate or melamine products. The best value is made available by selecting from the standard features listed below (Default settings in the configurator)

Standard door

None

Standard Sizes

Width ranges 9" to 30"
Height ranges 18" to 42"
Depth ranges 9" to 30"

Standard features

Unfinished Sides - ¾" white melamine
Finished Sides - ¾" HPL exterior, white liner interior
Unfinished bottom - ¾" white melamine
Unfinished top stretchers - ¾" white melamine
Unfinished back - ½" white melamine (Dado in sides)
Unfinished shelves - None
Unfinished shelves - None
Drawer front - ¾" HPL exterior, white liner interior
Cabinet edgeband - .018 PVC
Drawer front edgeband - .018 PVC or 3mm PVC
Drawer Box - ½" white melamine

Standard Hardware

Hinges - None
Drawer Slide - FR5000 Fuller full extension ball bearing (100 lb.)
Pull - 4" satin chrome wire pull
Shelf Clips - None
15 Quart Plastic Trash Bin (White)

Standard Options

Finished ends - ¾" HPL exterior, white liner interior

Custom Options

Sub-Bases - ¾" plywood construction (Cabinets have a flush bottom, sub bases ordered separately)
Locks - Choice of lock and key options
Finished Interiors - ¾" HPL interiors with either white liner exterior or matching HPL exteriors, determined by finished end selection.

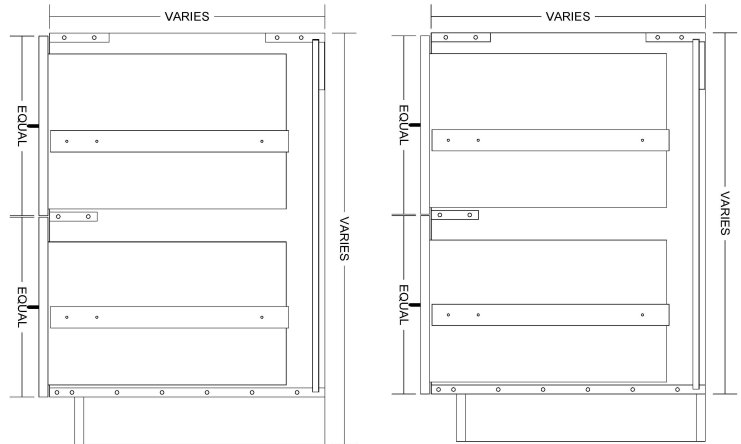
Accessory Options

See Accessory list which include Hardware, Components and Operations.

B0D2D



**Base 2 drawer cabinet
2 equal drawer fronts**



**TYPICAL: B0D2D-M
INTEGRAL AND LOOSE SUBBASE APPLICATIONS**

Laminate cabinets are available in a wide range of standard features and options. Additionally, custom configurations are possible. The website supports many of the features needed to quote and order commercial grade laminate or melamine products. The best value is made available by selecting from the standard features listed below (Default settings in the configurator)

Standard door

None

Standard Sizes

Width ranges 9" to 30"
Height ranges 18" to 42"
Depth ranges 9" to 30"

Standard features

Unfinished Sides - ¾" white melamine
Finished Sides - ¾" HPL exterior, white liner interior
Unfinished bottom - ¾" white melamine
Unfinished top stretchers - ¾" white melamine
Unfinished back - ½" white melamine (Dado in sides)
Unfinished shelves - None
Unfinished shelves - None
Drawer front - ¾" HPL exterior, white liner interior
Cabinet edgeband - .018 PVC
Drawer front edgeband - .018 PVC or 3mm PVC
Drawer Box - ½" white melamine

Standard Hardware

Hinges - None
Drawer Slide - FR5000 Fuller full extension ball bearing (100 lb.)
Pull - 4" satin chrome wire pull
Shelf Clips - None

Standard Options

Finished ends - ¾" HPL exterior, white liner interior

Custom Options

Sub-Bases - ¾" plywood construction (Cabinets have a flush bottom, sub bases ordered separately)
Locks - Choice of lock and key options
Finished Interiors - ¾" HPL interiors with either white liner exterior or matching HPL exteriors, determined by finished end selection.

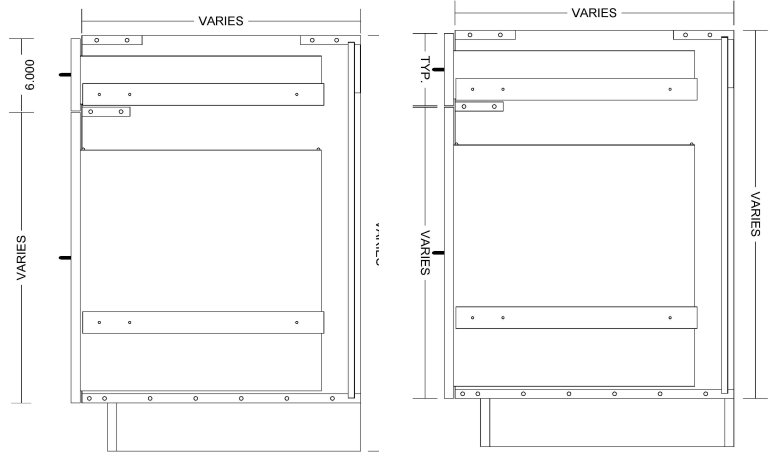
Accessory Options

See Accessory list which include Hardware, Components and Operations.

B0D2D-1



Base 2 drawer cabinet,
Typical Top drawer front 6" high



TYPICAL: B0D2D-M
INTEGRAL AND LOOSE SUBBASE APPLICATIONS

Laminate cabinets are available in a wide range of standard features and options. Additionally, custom configurations are possible. The website supports many of the features needed to quote and order commercial grade laminate or melamine products. The best value is made available by selecting from the standard features listed below (Default settings in the configurator)

Standard door

None

Standard Sizes

Width ranges 9" to 30"
Height ranges 18" to 42"
Depth ranges 9" to 30"

Standard features

Unfinished Sides - ¾" white melamine
Finished Sides - ¾" HPL exterior, white liner interior
Unfinished bottom - ¾" white melamine
Unfinished top stretchers - ¾" white melamine
Unfinished back - ½" white melamine (Dado in sides)
Unfinished shelves - None
Unfinished shelves - None
Drawer front - ¾" HPL exterior, white liner interior
Cabinet edgeband - .018 PVC
Drawer front edgeband - .018 PVC or 3mm PVC
Drawer Box - ½" white melamine

Standard Hardware

Hinges - None
Drawer Slide - FR5000 Fuller full extension ball bearing (100 lb.)
Pull - 4" satin chrome wire pull
Shelf Clips - None

Standard Options

Finished ends - ¾" HPL exterior, white liner interior

Custom Options

Sub-Bases - ¾" plywood construction (Cabinets have a flush bottom, sub bases ordered separately)
Locks - Choice of lock and key options
Finished Interiors - ¾" HPL interiors with either white liner exterior or matching HPL exteriors, determined by finished end selection.

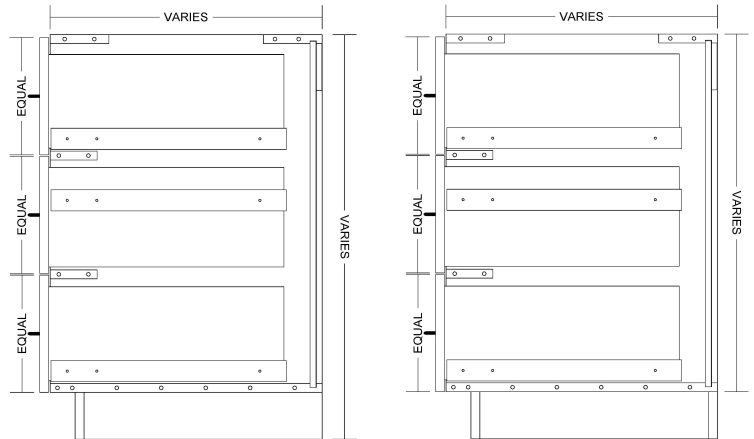
Accessory Options

See Accessory list which include Hardware, Components and Operations.

B0D3D



Base 3 drawer cabinet
3 equals drawer fronts



TYPICAL: B0D3D-M
INTEGRAL AND LOOSE SUBBASE APPLICATIONS

Laminate cabinets are available in a wide range of standard features and options. Additionally, custom configurations are possible. The website supports many of the features needed to quote and order commercial grade laminate or melamine products. The best value is made available by selecting from the standard features listed below (Default settings in the configurator)

Standard door

None

Standard Sizes

Width ranges 9" to 30"
Height ranges 18" to 42"
Depth ranges 9" to 30"

Standard features

Unfinished Sides - 3/4" white melamine
Finished Sides - 3/4" HPL exterior, white liner interior
Unfinished bottom - 3/4" white melamine
Unfinished top stretchers - 3/4" white melamine
Unfinished back - 1/2" white melamine (Dado in sides)
Unfinished shelves - None
Unfinished shelves - None
Drawer front - 3/4" HPL exterior, white liner interior
Cabinet edgeband - .018 PVC
Drawer front edgeband - .018 PVC or 3mm PVC
Drawer Box - 1/2" white melamine

Standard Hardware

Hinges - None
Drawer Slide - FR5000 Fuller full extension ball bearing (100 lb.)
Pull - 4" satin chrome wire pull
Shelf Clips - None

Standard Options

Finished ends - 3/4" HPL exterior, white liner interior

Custom Options

Sub-Bases - 3/4" plywood construction (Cabinets have a flush bottom, sub bases ordered separately)
Locks - Choice of lock and key options
Finished Interiors - 3/4" HPL interiors with either white liner exterior or matching HPL exteriors, determined by finished end selection.

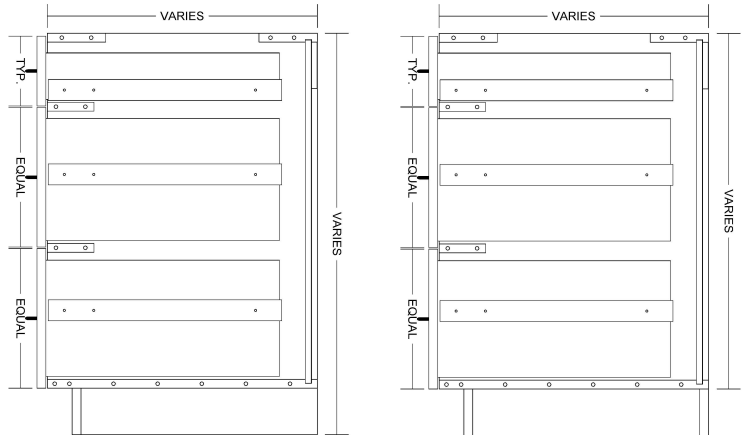
Accessory Options

See Accessory list which include Hardware, Components and Operations.

B0D3D-1



Base 3 drawer cabinet,
Top drawer front 6"



TYPICAL: B0D3D-1-M
INTEGRAL AND LOOSE SUBBASE APPLICATIONS

Laminate cabinets are available in a wide range of standard features and options. Additionally, custom configurations are possible. The website supports many of the features needed to quote and order commercial grade laminate or melamine products. The best value is made available by selecting from the standard features listed below (Default settings in the configurator)

Standard door

None

Standard Sizes

Width ranges 9" to 30"
Height ranges 18" to 42"
Depth ranges 9" to 30"

Standard features

Unfinished Sides - 3/4" white melamine
Finished Sides - 3/4" HPL exterior, white liner interior
Unfinished bottom - 3/4" white melamine
Unfinished top stretchers - 3/4" white melamine
Unfinished back - 1/2" white melamine (Dado in sides)
Unfinished shelves - None
Unfinished shelves - None
Drawer front - 3/4" HPL exterior, white liner interior
Cabinet edgeband - .018 PVC
Drawer front edgeband - .018 PVC or 3mm PVC
Drawer Box - 1/2" white melamine

Standard Hardware

Hinges - None
Drawer Slide - FR5000 Fuller full extension ball bearing (100 lb.)
Pull - 4" satin chrome wire pull
Shelf Clips - None

Standard Options

Finished ends - 3/4" HPL exterior, white liner interior

Custom Options

Sub-Bases - 3/4" plywood construction (Cabinets have a flush bottom, sub bases ordered separately)
Locks - Choice of lock and key options
Finished Interiors - 3/4" HPL interiors with either white liner exterior or matching HPL exteriors, determined by finished end selection.

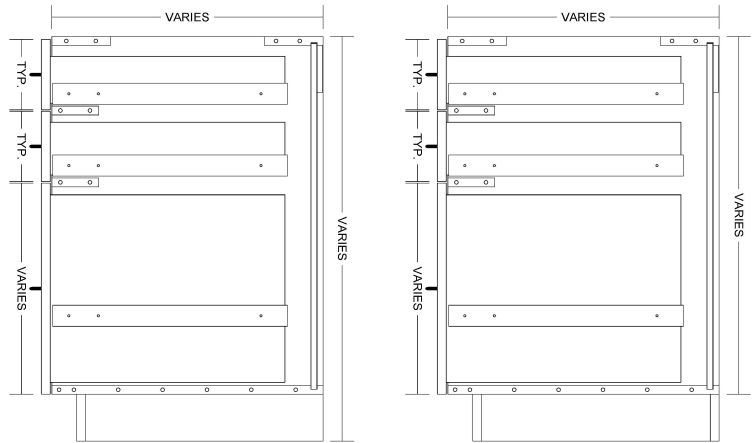
Accessory Options

See Accessory list which include Hardware, Components and Operations.

B0D3D-2



Base 3 drawer cabinet,
Typical Top 2 drawer fronts 6" high



TYPICAL: B0D3D-2-M
INTEGRAL AND LOOSE SUBBASE APPLICATIONS

Laminate cabinets are available in a wide range of standard features and options. Additionally, custom configurations are possible. The website supports many of the features needed to quote and order commercial grade laminate or melamine products. The best value is made available by selecting from the standard features listed below (Default settings in the configurator)

Standard door

None

Standard Sizes

Width ranges 9" to 30"
Height ranges 18" to 42"
Depth ranges 9" to 30"

Standard features

Unfinished Sides - ¾" white melamine
Finished Sides - ¾" HPL exterior, white liner interior
Unfinished bottom - ¾" white melamine
Unfinished top stretchers - ¾" white melamine
Unfinished back - ½" white melamine (Dado in sides)
Unfinished shelves - None
Unfinished shelves - None
Drawer front - ¾" HPL exterior, white liner interior
Cabinet edgeband - .018 PVC
Drawer front edgeband - .018 PVC or 3mm PVC
Drawer Box - ½" white melamine

Standard Hardware

Hinges - None
Drawer Slide - FR5000 Fuller full extension ball bearing (100 lb.)
Pull - 4" satin chrome wire pull
Shelf Clips - None

Standard Options

Finished ends - ¾" HPL exterior, white liner interior

Custom Options

Sub-Bases - ¾" plywood construction (Cabinets have a flush bottom, sub bases ordered separately)
Locks - Choice of lock and key options
Finished Interiors - ¾" HPL interiors with either white liner exterior or matching HPL exteriors, determined by finished end selection.

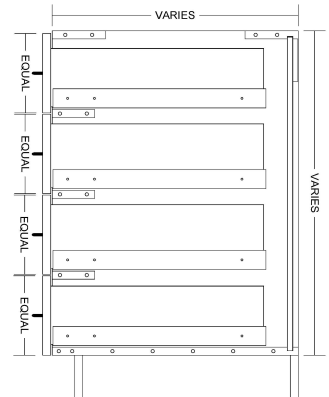
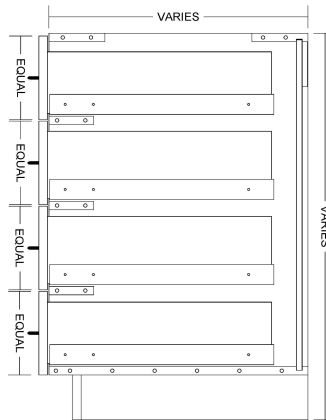
Accessory Options

See Accessory list which include Hardware, Components and Operations.

B0D4D



Base 4 drawer cabinet
4 equal drawer fronts



TYPICAL: B0D4D-1-M
INTEGRAL AND LOOSE SUBBASE APPLICATIONS

Laminate cabinets are available in a wide range of standard features and options. Additionally, custom configurations are possible. The website supports many of the features needed to quote and order commercial grade laminate or melamine products. The best value is made available by selecting from the standard features listed below (Default settings in the configurator)

Standard door

None

Standard Sizes

Width ranges 9" to 30"
Height ranges 18" to 42"
Depth ranges 9" to 30"

Standard features

Unfinished Sides - 3/4" white melamine
Finished Sides - 3/4" HPL exterior, white liner interior
Unfinished bottom - 3/4" white melamine
Unfinished top stretchers - 3/4" white melamine
Unfinished back - 1/2" white melamine (Dado in sides)
Unfinished shelves - None
Unfinished shelves - None
Drawer front - 3/4" HPL exterior, white liner interior
Cabinet edgeband - .018 PVC
Drawer front edgeband - .018 PVC or 3mm PVC
Drawer Box - 1/2" white melamine

Standard Hardware

Hinges - None
Drawer Slide - FR5000 Fuller full extension ball bearing (100 lb.)
Pull - 4" satin chrome wire pull
Shelf Clips - None

Standard Options

Finished ends - 3/4" HPL exterior, white liner interior

Custom Options

Sub-Bases - 3/4" plywood construction (Cabinets have a flush bottom, sub bases ordered separately)
Locks - Choice of lock and key options
Finished Interiors - 3/4" HPL interiors with either white liner exterior or matching HPL exteriors, determined by finished end selection.

Accessory Options

See Accessory list which include Hardware, Components and Operations.

B0D4D-1



Base 4 drawer cabinet,
Typical Top drawer front 6" high



TYPICAL: B0D4D-1-M
INTEGRAL AND LOOSE SUBBASE APPLICATIONS

Laminate cabinets are available in a wide range of standard features and options. Additionally, custom configurations are possible. The website supports many of the features needed to quote and order commercial grade laminate or melamine products. The best value is made available by selecting from the standard features listed below (Default settings in the configurator)

Standard door

None

Standard Sizes

Width ranges 9" to 30"
Height ranges 18" to 42"
Depth ranges 9" to 30"

Standard features

Unfinished Sides - ¾" white melamine
Finished Sides - ¾" HPL exterior, white liner interior
Unfinished bottom - ¾" white melamine
Unfinished top stretchers - ¾" white melamine
Unfinished back - ½" white melamine (Dado in sides)
Unfinished shelves - None
Unfinished shelves - None
Drawer front - ¾" HPL exterior, white liner interior
Cabinet edgeband - .018 PVC
Drawer front edgeband - .018 PVC or 3mm PVC
Drawer Box - ½" white melamine

Standard Hardware

Hinges - None
Drawer Slide - FR5000 Fuller full extension ball bearing (100 lb.)
Pull - 4" satin chrome wire pull
Shelf Clips - None

Standard Options

Finished ends - ¾" HPL exterior, white liner interior

Custom Options

Sub-Bases - ¾" plywood construction (Cabinets have a flush bottom, sub bases ordered separately)
Locks - Choice of lock and key options
Finished Interiors - ¾" HPL interiors with either white liner exterior or matching HPL exteriors, determined by finished end selection.

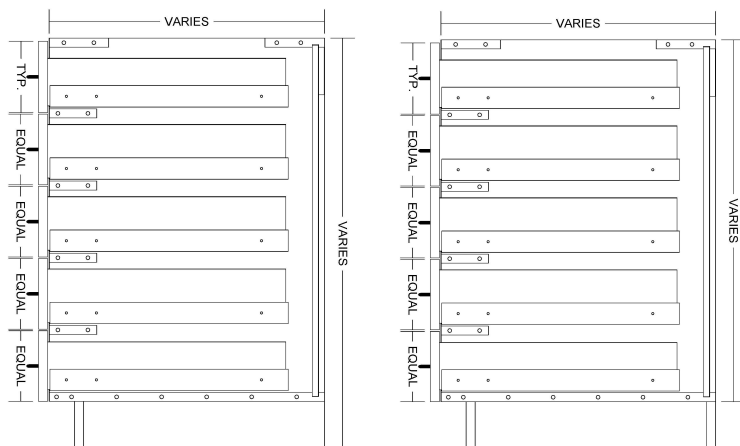
Accessory Options

See Accessory list which include Hardware, Components and Operations.

B0D5D-1



Base 5 drawer cabinet,
Typical Top drawer front 6" high



TYPICAL: B0D5D-1-M
INTEGRAL AND LOOSE SUBBASE APPLICATIONS

Laminate cabinets are available in a wide range of standard features and options. Additionally, custom configurations are possible. The website supports many of the features needed to quote and order commercial grade laminate or melamine products. The best value is made available by selecting from the standard features listed below (Default settings in the configurator)

Standard door

None

Standard Sizes

Width ranges 9" to 30"
Height ranges 18" to 42"
Depth ranges 9" to 30"

Standard features

Unfinished Sides - 3/4" white melamine
Finished Sides - 3/4" HPL exterior, white liner interior
Unfinished bottom - 3/4" white melamine
Unfinished top stretchers - 3/4" white melamine
Unfinished back - 1/2" white melamine (Dado in sides)
Unfinished shelves - None
Unfinished shelves - None
Drawer front - 3/4" HPL exterior, white liner interior
Cabinet edgeband - .018 PVC
Drawer front edgeband - .018 PVC or 3mm PVC
Drawer Box - 1/2" white melamine

Standard Hardware

Hinges - None
Drawer Slide - FR5000 Fuller full extension ball bearing (100 lb.)
Pull - 4" satin chrome wire pull
Shelf Clips - None

Standard Options

Finished ends - 3/4" HPL exterior, white liner interior

Custom Options

Sub-Bases - 3/4" plywood construction (Cabinets have a flush bottom, sub bases ordered separately)
Locks - Choice of lock and key options
Finished Interiors - 3/4" HPL interiors with either white liner exterior or matching HPL exteriors, determined by finished end selection.

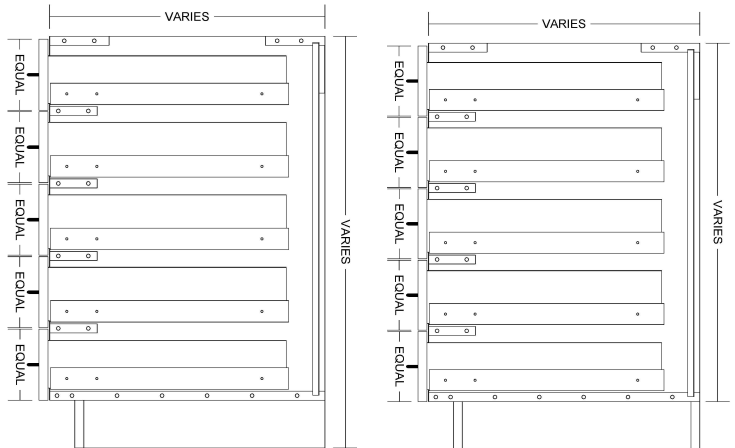
Accessory Options

See Accessory list which include Hardware, Components and Operations.

B0D5D



Base 5 drawer cabinet
5 equal drawer fronts



TYPICAL: B0D5D-M
INTEGRAL AND LOOSE SUBBASE APPLICATIONS

Laminate cabinets are available in a wide range of standard features and options. Additionally, custom configurations are possible. The website supports many of the features needed to quote and order commercial grade laminate or melamine products. The best value is made available by selecting from the standard features listed below (Default settings in the configurator)

Standard door

None

Standard Sizes

Width ranges 9" to 30"
Height ranges 18" to 42"
Depth ranges 9" to 30"

Standard features

Unfinished Sides - 3/4" white melamine
Finished Sides - 3/4" HPL exterior, white liner interior
Unfinished bottom - 3/4" white melamine
Unfinished top stretchers - 3/4" white melamine
Unfinished back - 1/2" white melamine (Dado in sides)
Unfinished shelves - None
Unfinished shelves - None
Drawer front - 3/4" HPL exterior, white liner interior
Cabinet edgeband - .018 PVC
Drawer front edgeband - .018 PVC or 3mm PVC
Drawer Box - 1/2" white melamine

Standard Hardware

Hinges - None
Drawer Slide - FR5000 Fuller full extension ball bearing (100 lb.)
Pull - 4" satin chrome wire pull
Shelf Clips - None

Standard Options

Finished ends - 3/4" HPL exterior, white liner interior

Custom Options

Sub-Bases - 3/4" plywood construction (Cabinets have a flush bottom, sub bases ordered separately)
Locks - Choice of lock and key options
Finished Interiors - 3/4" HPL interiors with either white liner exterior or matching HPL exteriors, determined by finished end selection.

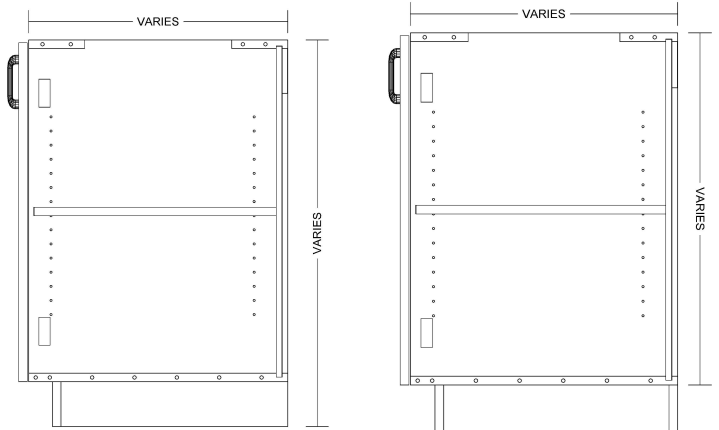
Accessory Options

See Accessory list which include Hardware, Components and Operations.

B2D



Base 2 door cabinet



TYPICAL: B2D-1AS-M
INTEGRAL AND LOOSE SUBBASE APPLICATIONS

Laminate cabinets are available in a wide range of standard features and options. Additionally, custom configurations are possible. The website supports many of the features needed to quote and order commercial grade laminate or melamine products. The best value is made available by selecting from the standard features listed below (Default settings in the configurator)

Standard door

Pair Hinges

Standard Sizes

Width ranges 18" to 39"
Height ranges 18" to 42"
Depth ranges 9" to 30"

Standard features

Unfinished Sides - 3/4" white melamine
Finished Sides - 3/4" HPL exterior, white liner interior
Unfinished bottom - 3/4" white melamine
Unfinished top stretchers - 3/4" white melamine
Unfinished back - 1/2" white melamine (Dado in sides)
Unfinished shelves - 3/4" white melamine (Less than 27" wide)
Unfinished shelves - 1" white melamine (27" and wider)
Doors - 3/4" HPL exterior, white liner interior
Cabinet edgeband - .018 PVC
Door edgeband - .018 PVC or 3mm PVC

Standard Hardware

Hinges - 120 degree Blum Hinge
Pull - 4" satin chrome wire pull
Shelf Clips - 5mm metal spoon

Standard Options

Finished ends - 3/4" HPL exterior, white liner interior

Custom Options

Sub-Bases - 3/4" plywood construction (Cabinets have a flush bottom, sub bases ordered separately)
Locks - Choice of lock and key options
Finished Interiors - 3/4" HPL interiors with either white liner exterior or matching HPL exteriors, determined by finished end selection.

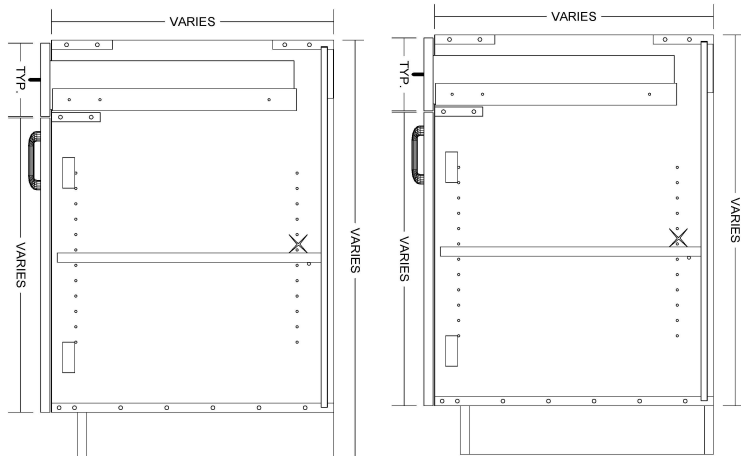
Accessory Options

See Accessory list which include Hardware, Components and Operations.

B2D1D



Base 2 door, 1 drawer cabinet
Typical Top drawer front 6" high



TYPICAL: B2D1D-1AS-M
INTEGRAL AND LOOSE SUBBASE APPLICATIONS

Laminate cabinets are available in a wide range of standard features and options. Additionally, custom configurations are possible. The website supports many of the features needed to quote and order commercial grade laminate or melamine products. The best value is made available by selecting from the standard features listed below (Default settings in the configurator)

Standard door

Pair Hinges

Standard Sizes

Width ranges 18" to 39"
Height ranges 18" to 42"
Depth ranges 9" to 30"

Standard features

Unfinished Sides - 3/4" white melamine
Finished Sides - 3/4" HPL exterior, white liner interior
Unfinished bottom - 3/4" white melamine
Unfinished top stretchers - 3/4" white melamine
Unfinished back - 1/2" white melamine (Dado in sides)
Unfinished shelves - 3/4" white melamine (Less than 27" wide)
Unfinished shelves - 1" white melamine (27" and wider)
Doors and Drawer front - 3/4" HPL exterior, white liner interior
Cabinet edgeband - .018 PVC
Door and Drawer front edgeband - .018 PVC or 3mm PVC
Drawer Box - 1/2" white melamine

Standard Hardware

Hinges - 120 degree Blum Hinge
Drawer Slide - FR5000 Fuller full extension ball bearing (100 lb.)
Pull - 4" satin chrome wire pull
Shelf Clips - 5mm metal spoon

Standard Options

Finished ends - 3/4" HPL exterior, white liner interior

Custom Options

Sub-Bases - 3/4" plywood construction (Cabinets have a flush bottom, sub bases ordered separately)
Locks - Choice of lock and key options
Finished Interiors - 3/4" HPL interiors with either white liner exterior or matching HPL exteriors, determined by finished end selection.

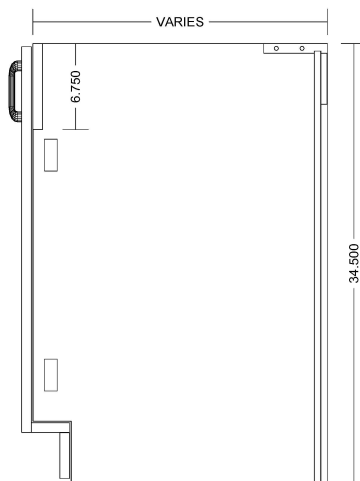
Accessory Options

See Accessory list which include Hardware, Components and Operations.

B2D-ATK



Base 2 door cabinet
with false front behind door, no
bottom, attach toe kick



TYPICAL: SB2D-ATK-M

Laminate cabinets are available in a wide range of standard features and options. Additionally, custom configurations are possible. The website supports many of the features needed to quote and order commercial grade laminate or melamine products. The best value is made available by selecting from the standard features listed below (Default settings in the configurator)

Standard door

Pair Hinges

Standard Sizes

Width ranges 18" to 39"
Height ranges 18" to 42"
Depth ranges 9" to 30"

Standard features

Unfinished Sides - 3/4" white melamine
Finished Sides - 3/4" HPL exterior, white liner interior
Unfinished bottom - None
Unfinished top stretchers - 3/4" white melamine
Unfinished back - 1/2" white melamine (Dado in sides)
Unfinished shelves - 3/4" white melamine (Less than 27" wide)
Unfinished shelves - 1" white melamine (27" and wider)
Doors - 3/4" HPL exterior, white liner interior
Cabinet edgeband - .018 PVC
Door edgeband - .018 PVC or 3mm PVC

Standard Hardware

Hinges - 120 degree Blum Hinge
Pull - 4" satin chrome wire pull
Shelf Clips - 5mm metal spoon

Standard Options

Finished ends - 3/4" HPL exterior, white liner interior

Custom Options

Sub-Bases - None
Locks - Choice of lock and key options
Finished Interiors - 3/4" HPL interiors with either white liner exterior or matching HPL exteriors, determined by finished end selection.

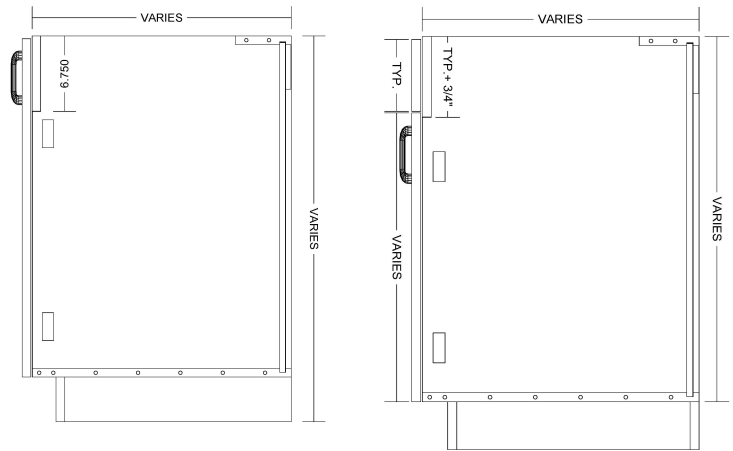
Accessory Options

See Accessory list which include Hardware, Components and Operations.

SB2D



Base 2 door cabinet
with false front behind door



TYPICAL: SB2D-0AS-M
INTEGRAL AND LOOSE SUBBASE APPLICATIONS

Laminate cabinets are available in a wide range of standard features and options. Additionally, custom configurations are possible. The website supports many of the features needed to quote and order commercial grade laminate or melamine products. The best value is made available by selecting from the standard features listed below (Default settings in the configurator)

Standard door

Pair Hinges

Standard Sizes

Width ranges 18" to 39"
Height ranges 18" to 42"
Depth ranges 9" to 30"

Standard features

Unfinished Sides - 3/4" white melamine
Finished Sides - 3/4" HPL exterior, white liner interior
Unfinished bottom - 3/4" white melamine
Unfinished top stretchers - 3/4" white melamine
Unfinished back - 1/2" white melamine (Dado in sides)
Unfinished shelves - 3/4" white melamine (Less than 27" wide)
Unfinished shelves - 1" white melamine (27" and wider)
Doors - 3/4" HPL exterior, white liner interior
Cabinet edgeband - .018 PVC
Door edgeband - .018 PVC or 3mm PVC

Standard Hardware

Hinges - 120 degree Blum Hinge
Pull - 4" satin chrome wire pull
Shelf Clips - 5mm metal spoon

Standard Options

Finished ends - 3/4" HPL exterior, white liner interior

Custom Options

Sub-Bases - 3/4" plywood construction (Cabinets have a flush bottom, sub bases ordered separately)
Locks - Choice of lock and key options
Finished Interiors - 3/4" HPL interiors with either white liner exterior or matching HPL exteriors, determined by finished end selection.

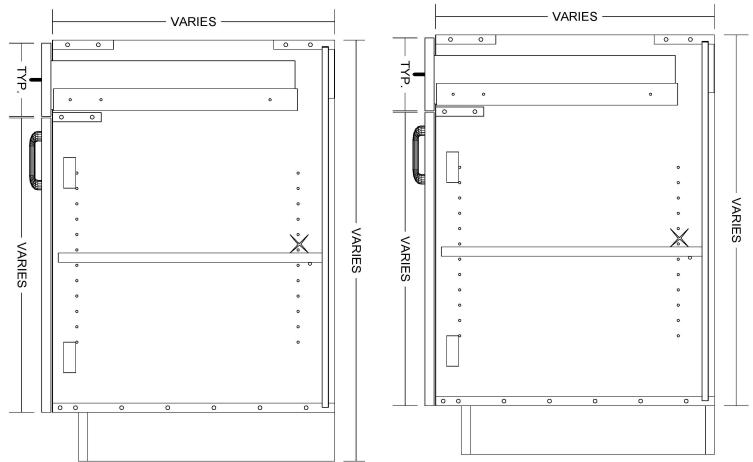
Accessory Options

See Accessory list which include Hardware, Components and Operations.

B2D2D



Base 2 doors, 2 drawers cabinet
Typical Top drawer front 6" high



TYPICAL: B2D2D-1AS-M
INTEGRAL AND LOOSE SUBBASE APPLICATIONS

Laminate cabinets are available in a wide range of standard features and options. Additionally, custom configurations are possible. The website supports many of the features needed to quote and order commercial grade laminate or melamine products. The best value is made available by selecting from the standard features listed below (Default settings in the configurator)

Standard door

Pair Hinges

Standard Sizes

Width ranges 18" to 39"
Height ranges 18" to 42"
Depth ranges 9" to 30"

Standard features

Unfinished Sides - 3/4" white melamine
Finished Sides - 3/4" HPL exterior, white liner interior
Unfinished bottom - 3/4" white melamine
Unfinished top stretchers - 3/4" white melamine
Unfinished back - 1/2" white melamine (Dado in sides)
Unfinished shelves - 3/4" white melamine (Less than 27" wide)
Unfinished shelves - 1" white melamine (27" and wider)
Doors and Drawer front - 3/4" HPL exterior, white liner interior
Cabinet edgeband - .018 PVC
Door and Drawer front edgeband - .018 PVC or 3mm PVC
Drawer Box - 1/2" white melamine

Standard Hardware

Hinges - 120 degree Blum Hinge
Drawer Slide - FR5000 Fuller full extension ball bearing (100 lb.)
Pull - 4" satin chrome wire pull
Shelf Clips - 5mm metal spoon

Standard Options

Finished ends - 3/4" HPL exterior, white liner interior

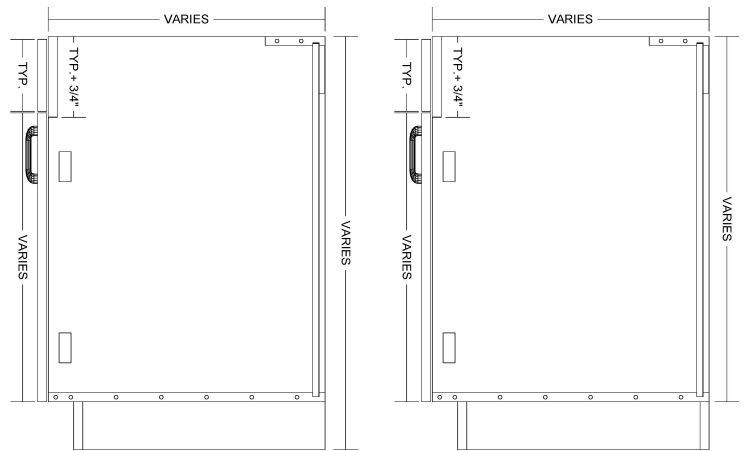
Custom Options

Sub-Bases - 3/4" plywood construction (Cabinets have a flush bottom, sub bases ordered separately)
Locks - Choice of lock and key options
Finished Interiors - 3/4" HPL interiors with either white liner exterior or matching HPL exteriors, determined by finished end selection.

Accessory Options

See Accessory list which include Hardware, Components and Operations.

SB2D2F



Base 2 doors, 2 false fronts cabinet
Typical Top false fronts 6" high

TYPICAL: SB2D1F-M
INTEGRAL AND LOOSE SUBBASE APPLICATIONS

Laminate cabinets are available in a wide range of standard features and options. Additionally, custom configurations are possible. The website supports many of the features needed to quote and order commercial grade laminate or melamine products. The best value is made available by selecting from the standard features listed below (Default settings in the configurator)

Standard door

Pair Hinges

Standard Sizes

Width ranges 18" to 39"
Height ranges 18" to 42"
Depth ranges 9" to 30"

Standard features

Unfinished Sides - 3/4" white melamine
Finished Sides - 3/4" HPL exterior, white liner interior
Unfinished bottom - 3/4" white melamine
Unfinished top stretchers - 3/4" white melamine
Unfinished back - 1/2" white melamine (Dado in sides)
Unfinished shelves - 3/4" white melamine (Less than 27" wide)
Unfinished shelves - 1" white melamine (27" and wider)
Doors and Drawer front - 3/4" HPL exterior, white liner interior
Cabinet edgeband - .018 PVC
Door and Drawer front edgeband - .018 PVC or 3mm PVC

Standard Hardware

Hinges - 120 degree Blum Hinge
Pull - 4" satin chrome wire pull
Shelf Clips - 5mm metal spoon

Standard Options

Finished ends - 3/4" HPL exterior, white liner interior

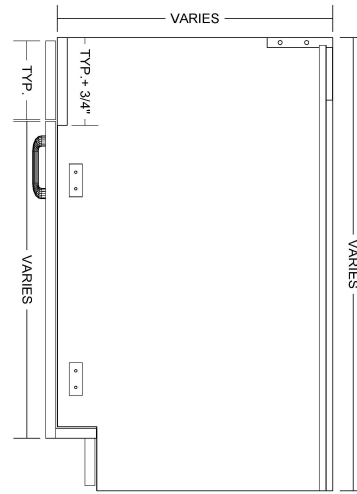
Custom Options

Sub-Bases - 3/4" plywood construction (Cabinets have a flush bottom, sub bases ordered separately)
Locks - Choice of lock and key options
Finished Interiors - 3/4" HPL interiors with either white liner exterior or matching HPL exteriors, determined by finished end selection.

Accessory Options

See Accessory list which include Hardware, Components and Operations.

SB2D2F-ATK



Base 2 doors, 2 false fronts cabinet,
Toe Kicks attached to back of doors

TYPICAL: SB2D2F-ATK-M
INTEGRAL AND LOOSE SUBBASE APPLICATIONS

Laminate cabinets are available in a wide range of standard features and options. Additionally, custom configurations are possible. The website supports many of the features needed to quote and order commercial grade laminate or melamine products. The best value is made available by selecting from the standard features listed below (Default settings in the configurator)

Standard door

Pair Hinges

Standard Sizes

Width ranges 18" to 39"
Height ranges 18" to 42"
Depth ranges 9" to 30"

Standard features

Unfinished Sides - 3/4" white melamine
Finished Sides - 3/4" HPL exterior, white liner interior
No bottom - Toe Kick attached to back of doors
Unfinished top stretchers - 3/4" white melamine
Unfinished back - 1/2" white melamine (Dado in sides)
Unfinished shelves - 3/4" white melamine (Less than 27" wide)
Unfinished shelves - 1" white melamine (27" and wider)
Doors and Drawer front - 3/4" HPL exterior, white liner interior
Cabinet edgeband - .018 PVC
Door and Drawer front edgeband - .018 PVC or 3mm PVC

Standard Hardware

Hinges - 120 degree Blum Hinge
Pull - 4" satin chrome wire pull
Shelf Clips - 5mm metal spoon

Standard Options

Finished ends - 3/4" HPL exterior, white liner interior

Custom Options

Sub-Bases - 3/4" plywood construction (Cabinets have a flush bottom, sub bases ordered separately)
Locks - Choice of lock and key options
Finished Interiors - 3/4" HPL interiors with either white liner exterior or matching HPL exteriors, determined by finished end selection.

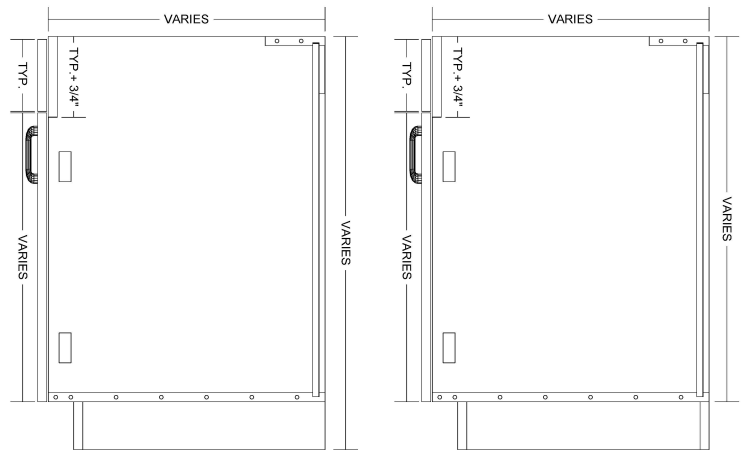
Accessory Options

See Accessory list which include Hardware, Components and Operations.

SB2D1F



Base 2 doors, 1 false front cabinet
Typical Top false front 6" high



TYPICAL: SB2D2F-M
INTEGRAL AND LOOSE SUBBASE APPLICATIONS

Laminate cabinets are available in a wide range of standard features and options. Additionally, custom configurations are possible. The website supports many of the features needed to quote and order commercial grade laminate or melamine products. The best value is made available by selecting from the standard features listed below (Default settings in the configurator)

Standard door

Pair Hinges

Standard Sizes

Width ranges 18" to 39"
Height ranges 18" to 42"
Depth ranges 9" to 30"

Standard features

Unfinished Sides - 3/4" white melamine
Finished Sides - 3/4" HPL exterior, white liner interior
Unfinished bottom - 3/4" white melamine
Unfinished top stretchers - 3/4" white melamine
Unfinished back - 1/2" white melamine (Dado in sides)
Unfinished shelves - 3/4" white melamine (Less than 27" wide)
Unfinished shelves - 1" white melamine (27" and wider)
Doors and Drawer front - 3/4" HPL exterior, white liner interior
Cabinet edgeband - .018 PVC
Door and Drawer front edgeband - .018 PVC or 3mm PVC

Standard Hardware

Hinges - 120 degree Blum Hinge
Pull - 4" satin chrome wire pull
Shelf Clips - 5mm metal spoon

Standard Options

Finished ends - 3/4" HPL exterior, white liner interior

Custom Options

Sub-Bases - 3/4" plywood construction (Cabinets have a flush bottom, sub bases ordered separately)
Locks - Choice of lock and key options
Finished Interiors - 3/4" HPL interiors with either white liner exterior or matching HPL exteriors, determined by finished end selection.

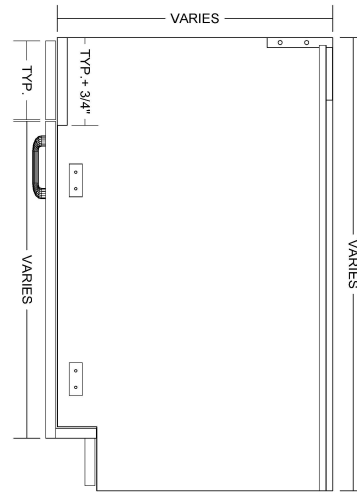
Accessory Options

See Accessory list which include Hardware, Components and Operations.

SB2D1F-ATK



Base 2 doors, 1 false front cabinet,
Toe Kicks attached to back of doors
Typical Top false front 6" high



TYPICAL: SB2D1F-ATK-M
INTEGRAL AND LOOSE SUBBASE APPLICATIONS

Laminate cabinets are available in a wide range of standard features and options. Additionally, custom configurations are possible. The website supports many of the features needed to quote and order commercial grade laminate or melamine products. The best value is made available by selecting from the standard features listed below (Default settings in the configurator)

Standard door

Pair Hinges

Standard Sizes

Width ranges 18" to 39"
Height ranges 18" to 42"
Depth ranges 9" to 30"

Standard features

Unfinished Sides - 3/4" white melamine
Finished Sides - 3/4" HPL exterior, white liner interior
No bottom - Toe Kick attached to back of doors
Unfinished top stretchers - 3/4" white melamine
Unfinished back - 1/2" white melamine (Dado in sides)
Unfinished shelves - 3/4" white melamine (Less than 27" wide)
Unfinished shelves - 1" white melamine (27" and wider)
Doors and Drawer front - 3/4" HPL exterior, white liner interior
Cabinet edgeband - .018 PVC
Door and Drawer front edgeband - .018 PVC or 3mm PVC

Standard Hardware

Hinges - 120 degree Blum Hinge
Pull - 4" satin chrome wire pull
Shelf Clips - 5mm metal spoon

Standard Options

Finished ends - 3/4" HPL exterior, white liner interior

Custom Options

Sub-Bases - 3/4" plywood construction (Cabinets have a flush bottom, sub bases ordered separately)
Locks - Choice of lock and key options
Finished Interiors - 3/4" HPL interiors with either white liner exterior or matching HPL exteriors, determined by finished end selection.

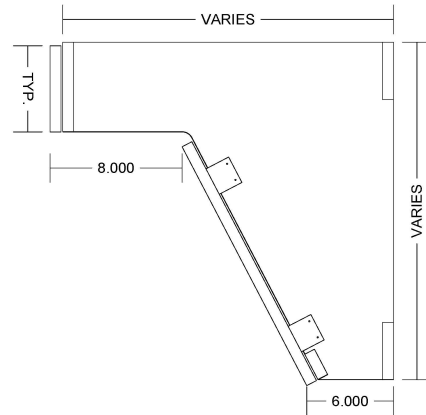
Accessory Options

See Accessory list which include Hardware, Components and Operations.

SB2F-ANGLED



VANITY with removable panel



TYPICAL: SB2D1F-ATK-M
INTEGRAL AND LOOSE SUBBASE APPLICATIONS

Laminate cabinets are available in a wide range of standard features and options. Additionally, custom configurations are possible. The website supports many of the features needed to quote and order commercial grade laminate or melamine products. The best value is made available by selecting from the standard features listed below (Default settings in the configurator)

Standard door

None

Standard Sizes

Width ranges 18" to 39"
Height ranges 18" to 28"
Depth ranges 18" to 30"

Standard features

Unfinished Sides - 3/4" white melamine
Finished Sides - 3/4" HPL exterior, white liner interior
Unfinished bottom - 3/4" white melamine
Unfinished top stretchers - 3/4" white melamine
Unfinished back - None
Unfinished shelves - None
Unfinished shelves - None
Doors and Drawer front - 3/4" HPL exterior, white liner interior
Cabinet edgeband - .018 PVC
Door and Drawer front edgeband - .018 PVC or 3mm PVC

Standard Hardware

Hinges - None
Pull - 4" satin chrome wire pull
Shelf Clips - None
Keku clips for removable panel

Standard Options

Finished ends - 3/4" HPL exterior, white liner interior

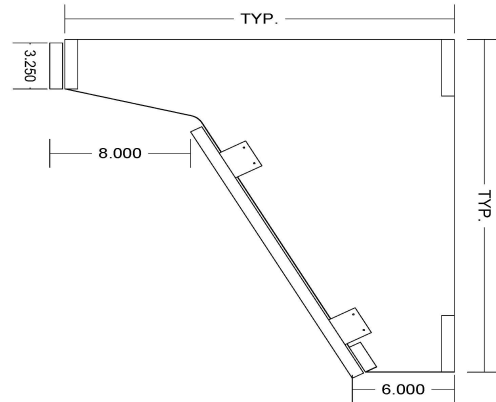
Custom Options

Sub-Bases - None
Locks - None
Finished Interiors - 3/4" HPL interiors with either white liner exterior or matching HPL exteriors, determined by finished end selection.

Accessory Options

See Accessory list which include Hardware, Components and Operations.

ADA SINK



ADA SINK with removable panel

Laminate cabinets are available in a wide range of standard features and options. Additionally, custom configurations are possible. The website supports many of the features needed to quote and order commercial grade laminate or melamine products. The best value is made available by selecting from the standard features listed below (Default settings in the configurator)

Standard door

None

Standard Sizes

Width ranges 18" to 39"

Height ranges 23 1/2"

Depth ranges 18" to 30"

Standard features

Unfinished Sides - 3/4" white melamine

Finished Sides - 3/4" HPL exterior, white liner interior

Unfinished bottom - 3/4" white melamine

Unfinished top stretchers - 3/4" white melamine

Unfinished back - None

Unfinished shelves - None

Unfinished shelves - None

Doors and Drawer front - 3/4" HPL exterior, white liner interior

Cabinet edgeband - .018 PVC

Door and Drawer front edgeband - .018 PVC or 3mm PVC

Standard Hardware

Hinges - None

Pull - 4" satin chrome wire pull

Shelf Clips - None

Keku clips for removable panel

Standard Options

Finished ends - 3/4" HPL exterior, white liner interior

Custom Options

Sub-Bases - None

Locks - None

Finished Interiors - 3/4" HPL interiors with either white liner exterior or matching HPL exteriors, determined by finished end selection.

Accessory Options

See Accessory list which include Hardware, Components and Operations.

T1DL/T1DR

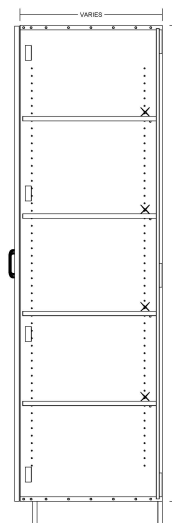
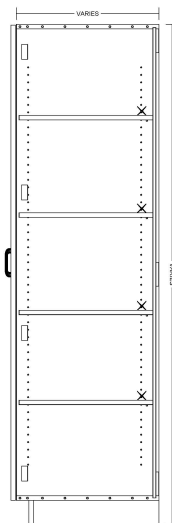


Left Hand Hinge



Right Hand Hinge

Tall 1 door cabinet



**TYPICAL: T1DL-4AS-M
T1DR-4AS-M
INTEGRAL AND LOOSE SUBBASE APPLICATIONS**

Laminate cabinets are available in a wide range of standard features and options. Additionally, custom configurations are possible. The website supports many of the features needed to quote and order commercial grade laminate or melamine products. The best value is made available by selecting from the standard features listed below (Default settings in the configurator)

Standard door

Left hand hinge
Right hand hinge

Standard Sizes

Width ranges 9" to 24"
Height ranges 42" to 96"
Depth ranges 9" to 30"

Standard features

Unfinished Sides - 3/4" white melamine
Finished Sides - 3/4" HPL exterior, white liner interior
Unfinished bottom - 3/4" white melamine
Unfinished top stretchers - 3/4" white melamine
Unfinished back - 1/2" white melamine (Dado in sides)
Unfinished shelves - 3/4" white melamine (Less than 27" wide)
Unfinished shelves - 1" white melamine (27" and wider)
Doors - 3/4" HPL exterior, white liner interior
Cabinet edgeband - .018 PVC
Door edgeband - .018 PVC or 3mm PVC

Standard Hardware

Hinges - 120 degree Blum Hinge
Pull - 4" satin chrome wire pull
Shelf Clips - 5mm metal spoon

Standard Options

Finished ends - 3/4" HPL exterior, white liner interior

Custom Options

Sub-Bases - 3/4" plywood construction (Cabinets have a flush bottom, sub bases ordered separately)
Locks - Choice of lock and key options
Finished Interiors - 3/4" HPL interiors with either white liner exterior or matching HPL exteriors, determined by finished end selection.

Accessory Options

See Accessory list which include Hardware, Components and Operations.

T1DL-TO/T1DR-TO

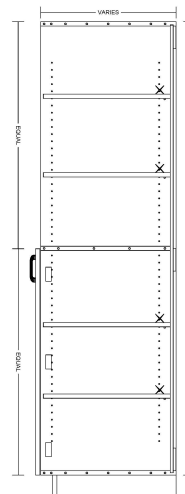
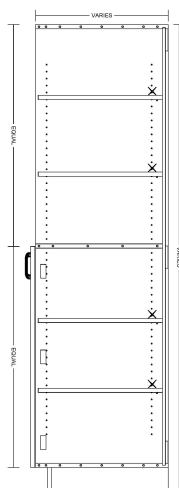


Left Hand Hinge



Right Hand Hinge

Tall 1 door cabinet with open
space above door



TYPICAL: T1DLTO-4AS-M
T1DRTO-4AS-M
INTEGRAL AND LOOSE SUBBASE APPLICATIONS

Laminate cabinets are available in a wide range of standard features and options. Additionally, custom configurations are possible. The website supports many of the features needed to quote and order commercial grade laminate or melamine products. The best value is made available by selecting from the standard features listed below (Default settings in the configurator)

Standard door

Left hand hinge
Right hand hinge

Standard Sizes

Width ranges 9" to 24"
Height ranges 42" to 96"
Depth ranges 9" to 30"

Standard features

Unfinished Sides - 3/4" HPL Interior, white liner exterior
Finished Sides - 3/4" HPL exterior, HPL interior
Finished bottom - 3/4" HPL exterior, HPL interior
Unfinished top - 3/4" HPL Interior, white liner exterior
Unfinished back - 1/2" HPL interior, white liner exterior
Unfinished shelves - 3/4" HPL 2 sides (Less than 27" wide)
Unfinished shelves - 1" HPL 2 sides (27" and wider)
Door - 3/4" HPL exterior, white liner interior
Cabinet edgeband - .018 PVC
Door edgeband - .018 PVC or 3mm PVC

Standard Hardware

Hinges - 120 degree Blum Hinge
Pull - 4" satin chrome wire pull
Shelf Clips - 5mm metal spoon

Standard Options

Finished ends - 3/4" HPL exterior, white liner interior

Custom Options

Sub-Bases - 3/4" plywood construction (Cabinets have a flush bottom, sub bases ordered separately)
Locks - Choice of lock and key options
Finished Interiors - 3/4" HPL interiors with either white liner exterior or matching HPL exteriors, determined by finished end selection.

Accessory Options

See Accessory list which include Hardware, Components and Operations.

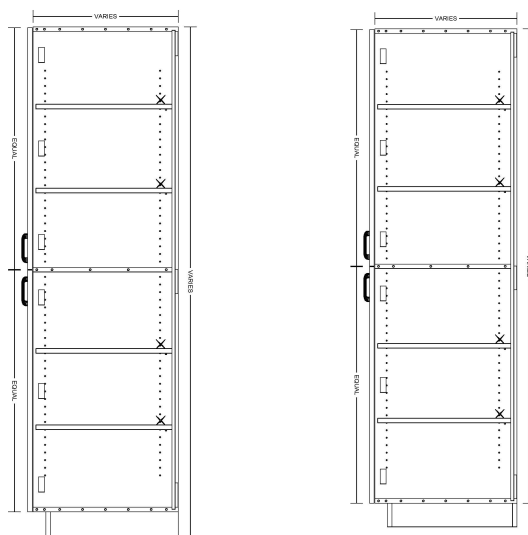
T1DL1DL/T1DR1DR



Left Hand Hinge

Right Hand Hinge

Tall 1 door over 1 door cabinet


TYPICAL: T1D1DL-4AS-M
T1D1DR-4AS-M

INTEGRAL AND LOOSE SUBBASE APPLICATIONS

Laminate cabinets are available in a wide range of standard features and options. Additionally, custom configurations are possible. The website supports many of the features needed to quote and order commercial grade laminate or melamine products. The best value is made available by selecting from the standard features listed below (Default settings in the configurator)

Standard door

Left hand hinge
Right hand hinge

Standard Sizes

Width ranges 9" to 24"
Height ranges 42" to 96"
Depth ranges 9" to 30"

Standard features

Unfinished Sides - ¾" white melamine
Finished Sides - ¾" HPL exterior, white liner interior
Unfinished bottom - ¾" white melamine
Unfinished top stretchers - ¾" white melamine
Unfinished back - ½" white melamine (Dado in sides)
Unfinished shelves - ¾" white melamine (Less than 27" wide)
Unfinished shelves - 1" white melamine (27" and wider)
Doors - ¾" HPL exterior, white liner interior
Cabinet edgeband - .018 PVC
Door edgeband - .018 PVC or 3mm PVC

Standard Hardware

Hinges - 120 degree Blum Hinge
Pull - 4" satin chrome wire pull
Shelf Clips - 5mm metal spoon

Standard Options

Finished ends - ¾" HPL exterior, white liner interior

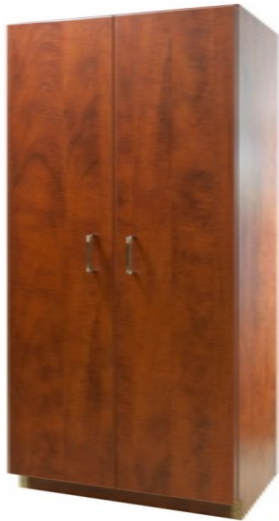
Custom Options

Sub-Bases - ¾" plywood construction (Cabinets have a flush bottom, sub bases ordered separately)
Locks - Choice of lock and key options
Finished Interiors - ¾" HPL interiors with either white liner exterior or matching HPL exteriors, determined by finished end selection.

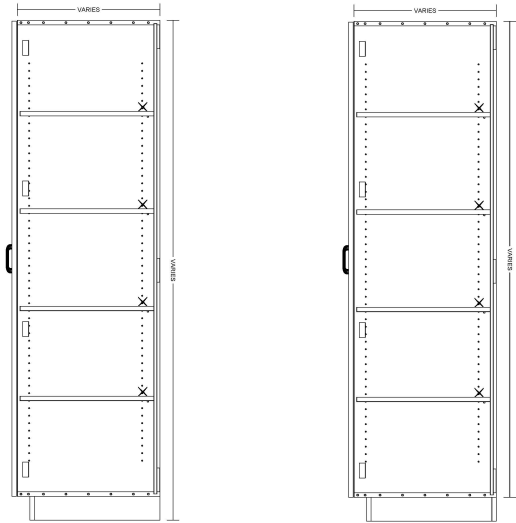
Accessory Options

See Accessory list which include Hardware, Components and Operations.

T2D



Tall 2 door cabinet



TYPICAL: T2D-4AS-M
INTEGRAL AND LOOSE SUBBASE APPLICATIONS

Laminate cabinets are available in a wide range of standard features and options. Additionally, custom configurations are possible. The website supports many of the features needed to quote and order commercial grade laminate or melamine products. The best value is made available by selecting from the standard features listed below (Default settings in the configurator)

Standard door

Pair Hinges

Standard Sizes

Width ranges 30" to 39"
Height ranges 42" to 96"
Depth ranges 9" to 30"

Standard features

Unfinished Sides - 3/4" white melamine
Finished Sides - 3/4" HPL exterior, white liner interior
Unfinished bottom - 3/4" white melamine
Unfinished top stretchers - 3/4" white melamine
Unfinished back - 1/2" white melamine (Dado in sides)
Unfinished shelves - 3/4" white melamine (Less than 27" wide)
Unfinished shelves - 1" white melamine (27" and wider)
Doors - 3/4" HPL exterior, white liner interior
Cabinet edgeband - .018 PVC
Door edgeband - .018 PVC or 3mm PVC

Standard Hardware

Hinges - 120 degree Blum Hinge
Pull - 4" satin chrome wire pull
Shelf Clips - 5mm metal spoon

Standard Options

Finished ends - 3/4" HPL exterior, white liner interior

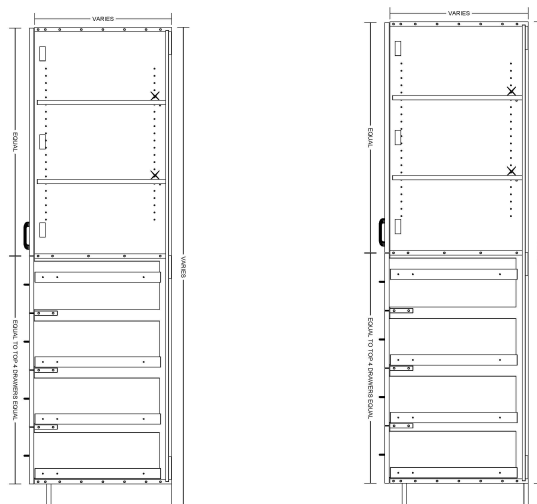
Custom Options

Sub-Bases - 3/4" plywood construction (Cabinets have a flush bottom, sub bases ordered separately)
Locks - Choice of lock and key options
Finished Interiors - 3/4" HPL interiors with either white liner exterior or matching HPL exteriors, determined by finished end selection.

Accessory Options

See Accessory list which include Hardware, Components and Operations.

T2D4D



Tall 2 door cabinet, 4 Eq drawers

TYPICAL: T2D4D-2AS-M
INTEGRAL AND LOOSE SUBBASE APPLICATIONS

Laminate cabinets are available in a wide range of standard features and options. Additionally, custom configurations are possible. The website supports many of the features needed to quote and order commercial grade laminate or melamine products. The best value is made available by selecting from the standard features listed below (Default settings in the configurator)

Standard door

Pair Hinges

Standard Sizes

Width ranges 30" to 39"
Height ranges 42" to 96"
Depth ranges 9" to 30"

Standard features

Unfinished Sides - $\frac{3}{4}$ " white melamine
Finished Sides - $\frac{3}{4}$ " HPL exterior, white liner interior
Unfinished divider - $\frac{3}{4}$ " white melamine
Unfinished fixed shelf - $\frac{3}{4}$ " white melamine
Unfinished bottom - $\frac{3}{4}$ " white melamine
Unfinished top stretchers - $\frac{3}{4}$ " white melamine
Unfinished back - $\frac{1}{2}$ " white melamine (Dado in sides)
Unfinished shelves - $\frac{3}{4}$ " white melamine (Less than 27" wide)
Unfinished shelves - 1" white melamine (27" and wider)
Doors - $\frac{3}{4}$ " HPL exterior, white liner interior
Cabinet edgeband - .018 PVC
Door edgeband - .018 PVC or 3mm PVC
Drawer front edgeband - .018 PVC or 3mm PVC
Drawer Box - $\frac{1}{2}$ " white melamine

Standard Hardware

Hinges - 120 degree Blum Hinge
Drawer Slide - FR5000 Fullerter full extension ball bearing (100 lb.)
Pull - 4" satin chrome wire pull
Shelf Clips - 5mm metal spoon
Standard Options

Custom Options

Finished ends - $\frac{3}{4}$ " HPL exterior, white liner interior
Sub-Bases - $\frac{3}{4}$ " plywood construction (Cabinets have a flush bottom, sub bases ordered separately)
Locks - Choice of lock and key options
Finished Interiors - $\frac{3}{4}$ " HPL interiors with either white liner exterior or matching HPL exteriors, determined by finished end selection.

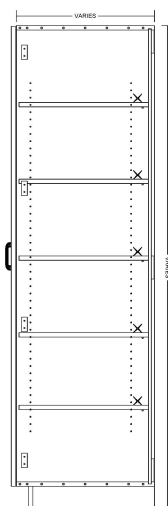
Accessory Options

See Accessory list which include Hardware, Components and Operations.

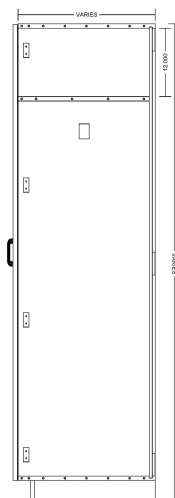
T2D-WDB



Tall 2 door cabinet, fixed divider, hanging area on left with closet rod, adjustable shelf area on right.



LEFT SECTION



RIGHT SECTION

TYPICAL: T2D-WDB-4AS-M
INTEGRAL AND LOOSE SUBBASE APPLICATIONS

Laminate cabinets are available in a wide range of standard features and options. Additionally, custom configurations are possible. The website supports many of the features needed to quote and order commercial grade laminate or melamine products. The best value is made available by selecting from the standard features listed below (Default settings in the configurator)

Standard door

Pair Hinges

Standard Sizes

Width ranges 30" to 39"
Height ranges 42" to 96"
Depth ranges 9" to 30"

Standard features

Unfinished Sides - 3/4" white melamine
Finished Sides - 3/4" HPL exterior, white liner interior
Unfinished divider - 3/4" white melamine
Unfinished fixed shelf - 3/4" white melamine
Unfinished bottom - 3/4" white melamine
Unfinished top stretchers - 3/4" white melamine
Unfinished back - 1/2" white melamine (Dado in sides)
Unfinished shelves - 3/4" white melamine (Less than 27" wide)
Unfinished shelves - 1" white melamine (27" and wider)
Doors - 3/4" HPL exterior, white liner interior
Cabinet edgeband - .018 PVC
Door edgeband - .018 PVC or 3mm PVC

Standard Hardware

Hinges - 120 degree Blum Hinge
Pull - 4" satin chrome wire pull
Shelf Clips - 5mm metal spoon
Closet rod and flanges

Standard Options

Finished ends - 3/4" HPL exterior, white liner interior

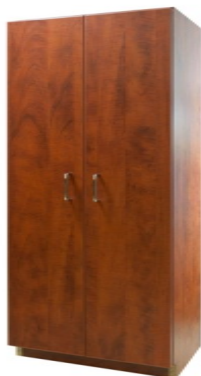
Custom Options

Sub-Bases - 3/4" plywood construction (Cabinets have a flush bottom, sub bases ordered separately)
Locks - Choice of lock and key options
Finished Interiors - 3/4" HPL interiors with either white liner exterior or matching HPL exteriors, determined by finished end selection.

Accessory Options

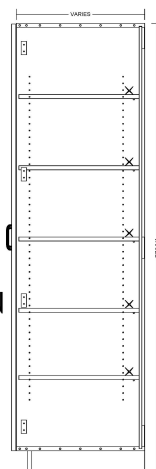
See Accessory list which include Hardware, Components and Operations.

T2D-WDB-2D

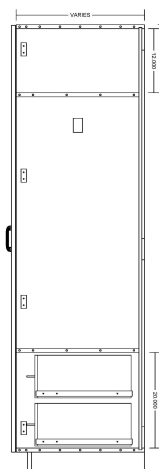


Tall 2 door cabinet,
fixed divider,
hanging area on
left with closet
rod, adjustable
shelf area on right,
2 drawers behind
doors.

LEFT SECTION



RIGHT SECTION



TYPICAL: T2D-WDB-2D-4AS-M
INTEGRAL AND LOOSE SUBBASE APPLICATIONS

Laminate cabinets are available in a wide range of standard features and options. Additionally, custom configurations are possible. The website supports many of the features needed to quote and order commercial grade laminate or melamine products. The best value is made available by selecting from the standard features listed below (Default settings in the configurator)

Standard door

Pair Hinges

Standard Sizes

Width ranges 30" to 39"
Height ranges 84" to 96"
Depth ranges 9" to 30"

Standard features

Unfinished Sides - ¾" white melamine
Finished Sides - ¾" HPL exterior, white liner interior
Unfinished divider - ¾" white melamine
Unfinished fixed shelf - ¾" white melamine
Unfinished bottom - ¾" white melamine
Unfinished top stretchers - ¾" white melamine
Unfinished back - ½" white melamine (Dado in sides)
Unfinished shelves - ¾" white melamine (Less than 27" wide)
Unfinished shelves - 1" white melamine (27" and wider)
Doors - ¾" HPL exterior, white liner interior
Cabinet edgeband - .018 PVC
Door edgeband - .018 PVC or 3mm PVC
Drawer front edgeband - .018 PVC or 3mm PVC
Drawer Box - ½" white melamine

Standard Hardware

Hinges - 120 degree Blum Hinge
Drawer Slide - FR5000 Fullerter full extension ball bearing (100 lb.)
Pull - 4" satin chrome wire pull
Shelf Clips - 5mm metal spoon
Closet rod and flanges
Hanging File Rails

Standard Options

Finished ends - ¾" HPL exterior, white liner interior

Custom Options

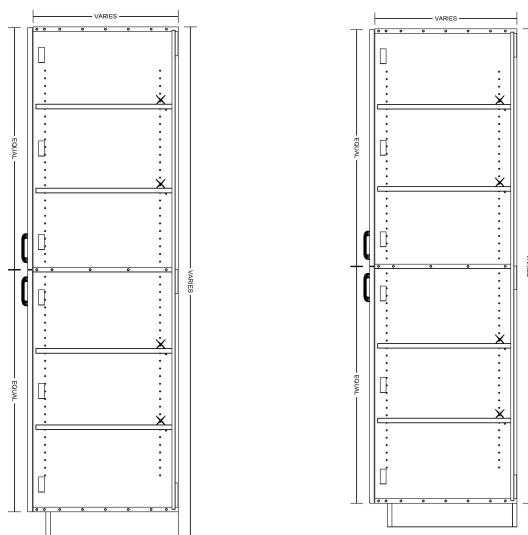
Sub-Bases - ¾" plywood construction (Cabinets have a flush bottom, sub bases ordered separately)
Locks - Choice of lock and key options
Finished Interiors - ¾" HPL interiors with either white liner exterior or matching HPL exteriors, determined by finished end selection.

Accessory Options See Accessory list which include Hardware, Components and Operations.

T2D2D



Tall 2 door over 2 door cabinet



TYPICAL: T2D2D-4AS-M
INTEGRAL AND LOOSE SUBBASE APPLICATIONS

Laminate cabinets are available in a wide range of standard features and options. Additionally, custom configurations are possible. The website supports many of the features needed to quote and order commercial grade laminate or melamine products. The best value is made available by selecting from the standard features listed below (Default settings in the configurator)

Standard door

Pair Hinges

Standard Sizes

Width ranges 30" to 39"
Height ranges 42" to 96"
Depth ranges 9" to 30"

Standard features

Unfinished Sides - 3/4" white melamine
Finished Sides - 3/4" HPL exterior, white liner interior
Unfinished bottom - 3/4" white melamine
Unfinished top stretchers - 3/4" white melamine
Unfinished back - 1/2" white melamine (Dado in sides)
Unfinished shelves - 3/4" white melamine (Less than 27" wide)
Unfinished shelves - 1" white melamine (27" and wider)
Doors - 3/4" HPL exterior, white liner interior
Cabinet edgeband - .018 PVC
Door edgeband - .018 PVC or 3mm PVC

Standard Hardware

Hinges - 120 degree Blum Hinge
Pull - 4" satin chrome wire pull
Shelf Clips - 5mm metal spoon

Standard Options

Finished ends - 3/4" HPL exterior, white liner interior

Custom Options

Sub-Bases - 3/4" plywood construction (Cabinets have a flush bottom, sub bases ordered separately)
Locks - Choice of lock and key options
Finished Interiors - 3/4" HPL interiors with either white liner exterior or matching HPL exteriors, determined by finished end selection.

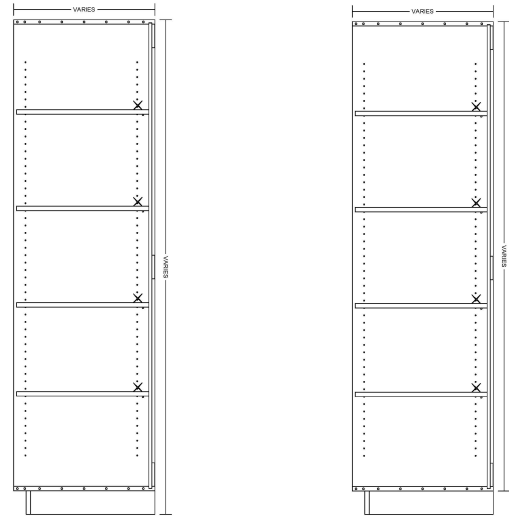
Accessory Options

See Accessory list which include Hardware, Components and Operations.

TOPEN



Tall open cabinet



TYPICAL: TOPEN-4AS-L
INTEGRAL AND LOOSE SUBBASE APPLICATIONS

Laminate cabinets are available in a wide range of standard features and options. Additionally, custom configurations are possible . The website supports many of the features needed to quote and order commercial grade laminate or melamine products The best value is made available by selecting from the standard features listed below (Default settings in the configurator)

Standard door

None

Standard Sizes

Width ranges 9" to 39"
Height ranges 42" to 96"
Depth ranges 9" to 30"

Standard features

Unfinished Sides - $\frac{3}{4}$ " HPL Interior, white liner exterior
Finished Sides - $\frac{3}{4}$ " HPL exterior, HPL interior
Finished bottom - $\frac{3}{4}$ " HPL exterior, HPL interior
Unfinished top - $\frac{3}{4}$ " HPL Interior, white liner exterior
Unfinished back - $\frac{1}{2}$ " HPL interior, white liner exterior
Unfinished shelves - $\frac{3}{4}$ " HPL 2 sides (Less than 27" wide)
Unfinished shelves - 1" HPL 2 sides (27" and wider)
Doors - None
Cabinet edgeband - .018 PVC
Door edgeband - .None

Standard Hardware

Hinges - None
Pull - None
Shelf Clips - 5mm metal spoon

Standard Options

Finished ends - $\frac{3}{4}$ " HPL exterior, $\frac{3}{4}$ " HPL exterior

Custom Options

Sub-Bases - $\frac{3}{4}$ " plywood construction (Cabinets have a flush bottom, sub bases ordered separately)
Locks - None
Finished Interiors - Finished Interiors are standard because of the exposed open area. Please unselect FI if white melamine is desired

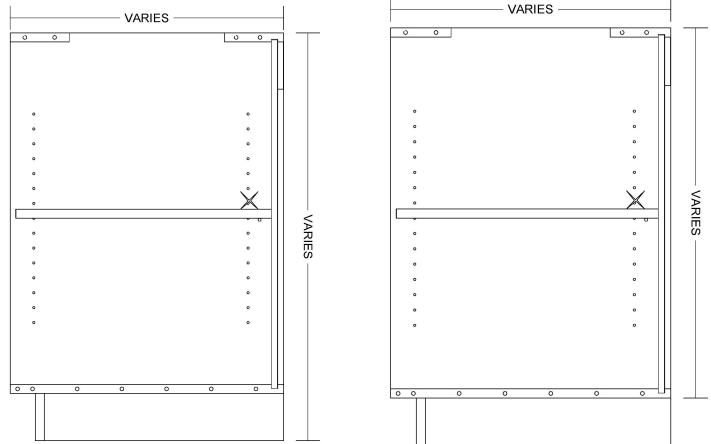
Accessory Options

See Accessory list which include Hardware, Components and Operations.

BOPEN



Base open cabinet



TYPICAL: BOPEN-1AS-L
INTEGRAL AND LOOSE SUBBASE APPLICATIONS

Laminate cabinets are available in a wide range of standard features and options. Additionally, custom configurations are possible. The website supports many of the features needed to quote and order commercial grade laminate or melamine products. The best value is made available by selecting from the standard features listed below (Default settings in the configurator)

Standard door

None

Standard Sizes

Width ranges 9" to 39"
Height ranges 12" to 42"
Depth ranges 9" to 30"

Standard features

Unfinished Sides - 3/4" HPL Interior, white liner exterior
Finished Sides - 3/4" HPL exterior, HPL interior
Finished bottom - 3/4" HPL exterior, HPL interior
Unfinished top - 3/4" HPL Interior, white liner exterior
Unfinished back - 1/2" HPL interior, white liner exterior
Unfinished shelves - 3/4" HPL 2 sides (Less than 27" wide)
Unfinished shelves - 1" HPL 2 sides (27" and wider)
Doors - None
Cabinet edgeband - .018 PVC
Door edgeband - .None

Standard Hardware

Hinges - None
Pull - None
Shelf Clips - 5mm metal spoon

Standard Options

Finished ends - 3/4" HPL exterior, 3/4" HPL exterior

Custom Options

Sub-Bases - 3/4" plywood construction (Cabinets have a flush bottom, sub bases ordered separately)
Locks - None
Finished Interiors - Finished Interiors are standard because of the exposed open area. Please unselect FI if white melamine is desired

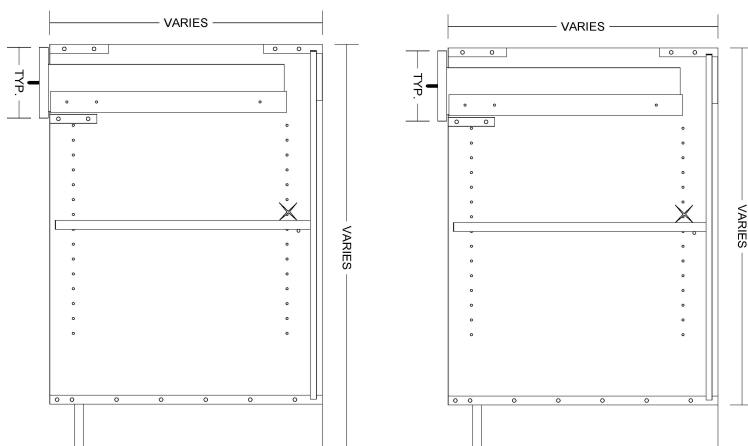
Accessory Options

See Accessory list which include Hardware, Components and Operations.

B0D1D-BO



Base open cabinet with
one 6" top drawer



TYPICAL: BOD1D-BO-1AS-L
INTEGRAL AND LOOSE SUBBASE APPLICATIONS

Laminate cabinets are available in a wide range of standard features and options. Additionally, custom configurations are possible. The website supports many of the features needed to quote and order commercial grade laminate or melamine products. The best value is made available by selecting from the standard features listed below (Default settings in the configurator)

Standard door

None

Standard Sizes

Width ranges 9" to 39"
Height ranges 12" to 42"
Depth ranges 9" to 30"

Standard features

Unfinished Sides - 3/4" HPL Interior, white liner exterior
Finished Sides - 3/4" HPL exterior, HPL interior
Finished bottom - 3/4" HPL exterior, HPL interior
Unfinished top - 3/4" HPL Interior, white liner exterior
Unfinished back - 1/2" HPL interior, white liner exterior
Unfinished shelves - 3/4" HPL 2 sides (Less than 27" wide)
Unfinished shelves - 1" HPL 2 sides (27" and wider)
Drawer Front - 3/4" HPL Interior, white liner exterior
Cabinet edgeband - .018 PVC
Drawer edgeband - .018 PVC or 3mm PVC

Standard Hardware

Hinges - None
Drawer Slide - FR5000 Fuller full extension ball bearing (100 lb.)
Pull - 4" satin chrome wire pull
Shelf Clips - 5mm metal spoon

Standard Options

Finished ends - 3/4" HPL exterior, 3/4" HPL exterior

Custom Options

Sub-Bases - 3/4" plywood construction (Cabinets have a flush bottom, sub bases ordered separately)
Locks - Choice of lock and key options
Finished Interiors - Finished Interiors are standard because of the exposed open area. Please unselect FI if white melamine is desired

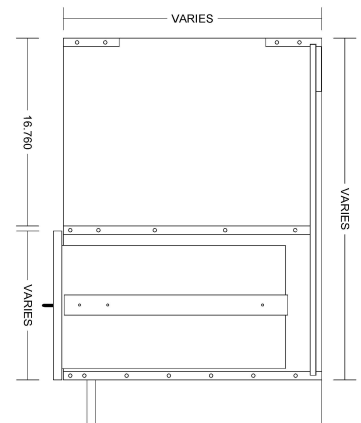
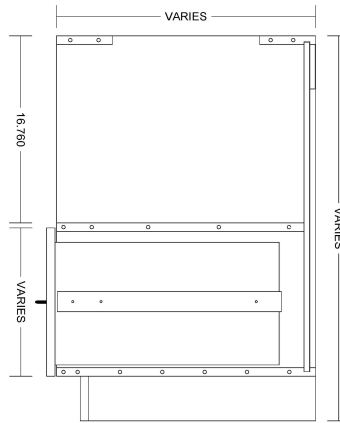
Accessory Options

See Accessory list which include Hardware, Components and Operations.

BOD1D-TO



Base open cabinet with
one file drawer on the bottom



TYPICAL: BOD1D-TO-1AS-L
INTEGRAL AND LOOSE SUBBASE APPLICATIONS

Laminate cabinets are available in a wide range of standard features and options. Additionally, custom configurations are possible. The website supports many of the features needed to quote and order commercial grade laminate or melamine products. The best value is made available by selecting from the standard features listed below (Default settings in the configurator)

Standard door

None

Standard Sizes

Width ranges 9" to 39" (15.75" wide required for letter files)
Height ranges 12" to 42"
Depth ranges 9" to 30"

Standard features

Unfinished Sides - 3/4" HPL Interior, white liner exterior
Finished Sides - 3/4" HPL exterior, HPL interior
Finished bottom - 3/4" HPL exterior, HPL interior
Unfinished top - 3/4" HPL Interior, white liner exterior
Unfinished back - 1/2" HPL interior, white liner exterior
Unfinished shelves - 3/4" HPL 2 sides (Less than 27" wide)
Unfinished shelves - 1" HPL 2 sides (27" and wider)
Drawer Front - 3/4" HPL Interior, white liner exterior
Cabinet edgeband - .018 PVC
Drawer edgeband - .018 PVC or 3mm PVC

Standard Hardware

Hinges - None
Drawer Slide - FR5000 Fuller full extension ball bearing (100 lb.)
Pull - 4" satin chrome wire pull
Shelf Clips - 5mm metal spoon
Hanging file rail

Standard Options

Finished ends - 3/4" HPL exterior, 3/4" HPL exterior

Custom Options

Sub-Bases - 3/4" plywood construction (Cabinets have a flush bottom, sub bases ordered separately)
Locks - Choice of lock and key options
Finished Interiors - Finished Interiors are standard because of the exposed open area. Please unselect FI if white melamine is desired

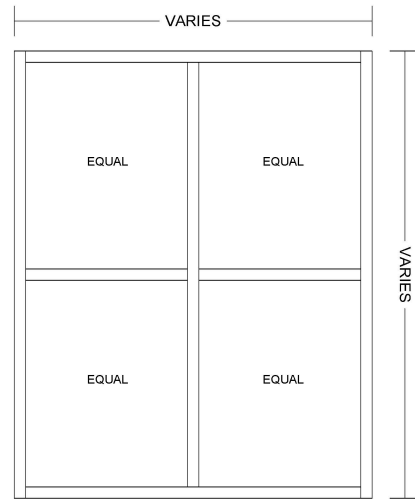
Accessory Options

See Accessory list which include Hardware, Components and Operations.

WOPEN-2X2



Open wall cabinet with
2 over 2 cubby holes



TYPICAL: WOPEN-2X2-L

Laminate cabinets are available in a wide range of standard features and options. Additionally, custom configurations are possible. The website supports many of the features needed to quote and order commercial grade laminate or melamine products. The best value is made available by selecting from the standard features listed below (Default settings in the configurator)

Standard door

None

Standard Sizes

Width ranges 12" to 39"
Height ranges 12" to 42"
Depth ranges 9" to 30"

Standard features

Unfinished Sides - 3/4" HPL Interior, white liner exterior
Finished Sides - 3/4" HPL exterior, HPL interior
Finished bottom - 3/4" HPL exterior, HPL interior
Unfinished top - 3/4" HPL Interior, white liner exterior
Unfinished back - 1/2" HPL interior, white liner exterior
Finished fixed shelves - 3/4" HPL 2 sides
Finished fixed dividers - 3/4" HPL 2 sides
Drawer Front - None
Cabinet edgeband - .018 PVC
Drawer edgeband - .None

Standard Hardware

Hinges - None
Pull - None
Shelf Clips - None

Standard Options

Finished ends - 3/4" HPL exterior, 3/4" HPL exterior

Custom Options

Finished Interiors - Finished Interiors are standard because of the exposed open area. Please unselect FI if white melamine is desired

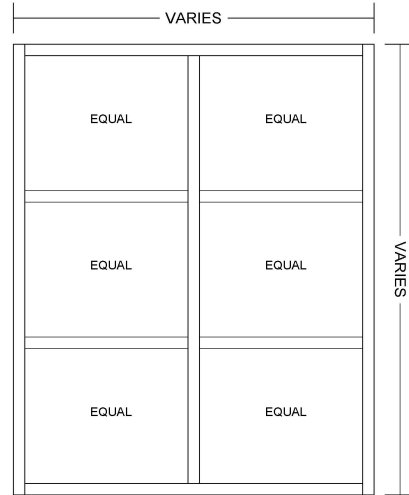
Accessory Options

See Accessory list which include Hardware, Components and Operations.

WOPEN 2X3



Open wall cabinet with
2 over 3 cubby holes



TYPICAL: WOPEN-2X3-L

Laminate cabinets are available in a wide range of standard features and options. Additionally, custom configurations are possible. The website supports many of the features needed to quote and order commercial grade laminate or melamine products. The best value is made available by selecting from the standard features listed below (Default settings in the configurator)

Standard door

None

Standard Sizes

Width ranges 12" to 39"
Height ranges 18" to 42"
Depth ranges 9" to 30"

Standard features

Unfinished Sides - 3/4" HPL Interior, white liner exterior
Finished Sides - 3/4" HPL exterior, HPL interior
Finished bottom - 3/4" HPL exterior, HPL interior
Unfinished top - 3/4" HPL Interior, white liner exterior
Unfinished back - 1/2" HPL interior, white liner exterior
Finished fixed shelves - 3/4" HPL 2 sides
Finished fixed dividers - 3/4" HPL 2 sides
Drawer Front - None
Cabinet edgeband - .018 PVC
Drawer edgeband - .None

Standard Hardware

Hinges - None
Pull - None
Shelf Clips - None

Standard Options

Finished ends - 3/4" HPL exterior, 3/4" HPL exterior

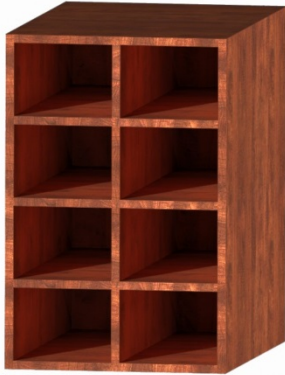
Custom Options

Finished Interiors - Finished Interiors are standard because of the exposed open area. Please unselect FI if white melamine is desired

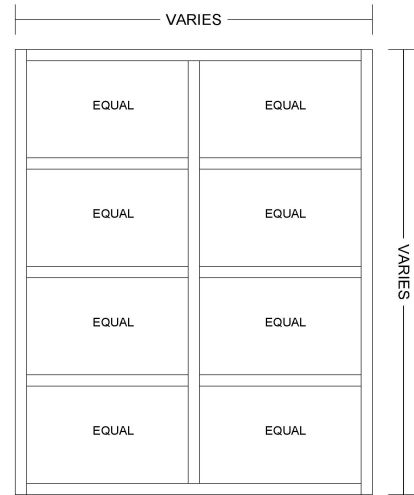
Accessory Options

See Accessory list which include Hardware, Components and Operations.

WOPEN -2X4



Open wall cabinet with
2 over 4 cubby holes



TYPICAL: WOPEN-2X4-L

Laminate cabinets are available in a wide range of standard features and options. Additionally, custom configurations are possible. The website supports many of the features needed to quote and order commercial grade laminate or melamine products. The best value is made available by selecting from the standard features listed below (Default settings in the configurator)

Standard door

None

Standard Sizes

Width ranges 12" to 39"
Height ranges 18" to 42"
Depth ranges 9" to 30"

Standard features

Unfinished Sides - 3/4" HPL Interior, white liner exterior
Finished Sides - 3/4" HPL exterior, HPL interior
Finished bottom - 3/4" HPL exterior, HPL interior
Unfinished top - 3/4" HPL Interior, white liner exterior
Unfinished back - 1/2" HPL interior, white liner exterior
Finished fixed shelves - 3/4" HPL 2 sides
Finished fixed dividers - 3/4" HPL 2 sides
Drawer Front - None
Cabinet edgeband - .018 PVC
Drawer edgeband - .None

Standard Hardware

Hinges - None
Pull - None
Shelf Clips - None

Standard Options

Finished ends - 3/4" HPL exterior, 3/4" HPL exterior

Custom Options

Finished Interiors - Finished Interiors are standard because of the exposed open area. Please unselect FI if white melamine is desired

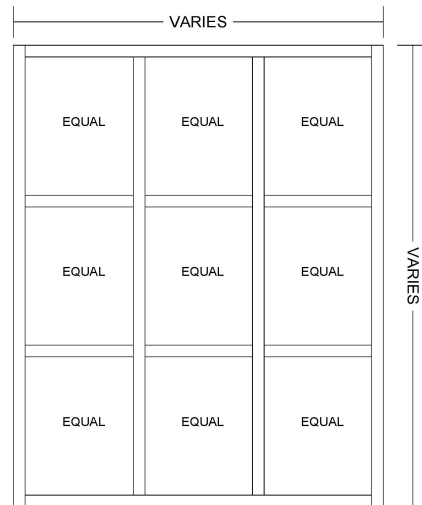
Accessory Options

See Accessory list which include Hardware, Components and Operations.

WOPEN-3X3



Open wall cabinet with
3 over 3 cubby holes



TYPICAL: WOPEN-3X3-L

Laminate cabinets are available in a wide range of standard features and options. Additionally, custom configurations are possible. The website supports many of the features needed to quote and order commercial grade laminate or melamine products. The best value is made available by selecting from the standard features listed below (Default settings in the configurator)

Standard door

None

Standard Sizes

Width ranges 18" to 39"
Height ranges 18" to 42"
Depth ranges 9" to 30"

Standard features

Unfinished Sides - $\frac{3}{4}$ " HPL Interior, white liner exterior
Finished Sides - $\frac{3}{4}$ " HPL exterior, HPL interior
Finished bottom - $\frac{3}{4}$ " HPL exterior, HPL interior
Unfinished top - $\frac{3}{4}$ " HPL Interior, white liner exterior
Unfinished back - $\frac{1}{2}$ " HPL interior, white liner exterior
Finished fixed shelves - $\frac{3}{4}$ " HPL 2 sides
Finished fixed dividers - $\frac{3}{4}$ " HPL 2 sides
Drawer Front - None
Cabinet edgeband - .018 PVC
Drawer edgeband - .None

Standard Hardware

Hinges - None
Pull - None
Shelf Clips - None

Standard Options

Finished ends - $\frac{3}{4}$ " HPL exterior, $\frac{3}{4}$ " HPL exterior

Custom Options

Finished Interiors - Finished Interiors are standard because of the exposed open area. Please unselect FI if white melamine is desired

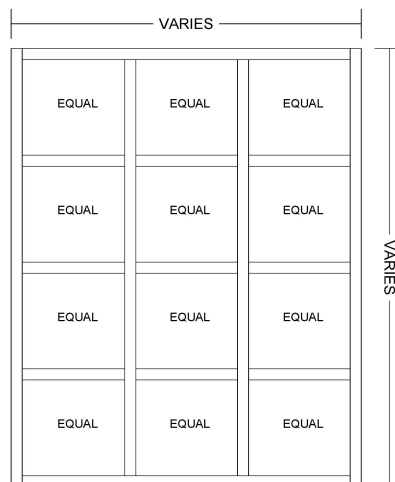
Accessory Options

See Accessory list which include Hardware, Components and Operations.

WOPEN-3X4



Open wall cabinet with
3 over 4 cubby holes



TYPICAL: WOPEN-3X4-L

Laminate cabinets are available in a wide range of standard features and options. Additionally, custom configurations are possible. The website supports many of the features needed to quote and order commercial grade laminate or melamine products. The best value is made available by selecting from the standard features listed below (Default settings in the configurator)

Standard door

None

Standard Sizes

Width ranges 18" to 39"

Height ranges 24" to 42"

Depth ranges 9" to 30"

Standard features

Unfinished Sides - 3/4" HPL Interior, white liner exterior

Finished Sides - 3/4" HPL exterior, HPL interior

Finished bottom - 3/4" HPL exterior, HPL interior

Unfinished top - 3/4" HPL Interior, white liner exterior

Unfinished back - 1/2" HPL interior, white liner exterior

Finished fixed shelves - 3/4" HPL 2 sides

Finished fixed dividers - 3/4" HPL 2 sides

Drawer Front - None

Cabinet edgeband - .018 PVC

Drawer edgeband - .None

Standard Hardware

Hinges - None

Pull - None

Shelf Clips - None

Standard Options

Finished ends - 3/4" HPL exterior, 3/4" HPL exterior

Custom Options

Finished Interiors - Finished Interiors are standard because of the exposed open area. Please unselect FI if white melamine is desired

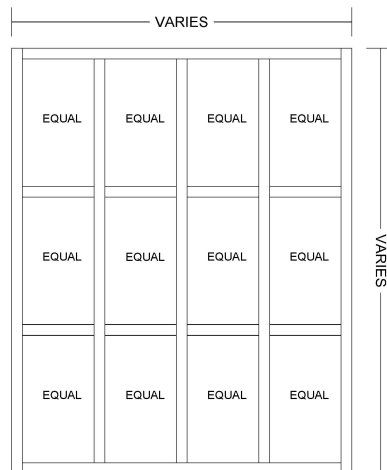
Accessory Options

See Accessory list which include Hardware, Components and Operations.

WOPEN- 4X3



Open wall cabinet with
4 over 3 cubby holes



TYPICAL: WOPEN-4X3-L

Laminate cabinets are available in a wide range of standard features and options. Additionally, custom configurations are possible. The website supports many of the features needed to quote and order commercial grade laminate or melamine products. The best value is made available by selecting from the standard features listed below (Default settings in the configurator)

Standard door

None

Standard Sizes

Width ranges 24" to 39"

Height ranges 18" to 42"

Depth ranges 9" to 30"

Standard features

Unfinished Sides - 3/4" HPL Interior, white liner exterior

Finished Sides - 3/4" HPL exterior, HPL interior

Finished bottom - 3/4" HPL exterior, HPL interior

Unfinished top - 3/4" HPL Interior, white liner exterior

Unfinished back - 1/2" HPL interior, white liner exterior

Finished fixed shelves - 3/4" HPL 2 sides

Finished fixed dividers - 3/4" HPL 2 sides

Drawer Front - None

Cabinet edgeband - .018 PVC

Drawer edgeband - .None

Standard Hardware

Hinges - None

Pull - None

Shelf Clips - None

Standard Options

Finished ends - 3/4" HPL exterior, 3/4" HPL exterior

Custom Options

Finished Interiors - Finished Interiors are standard because of the exposed open area. Please unselect FI if white melamine is desired

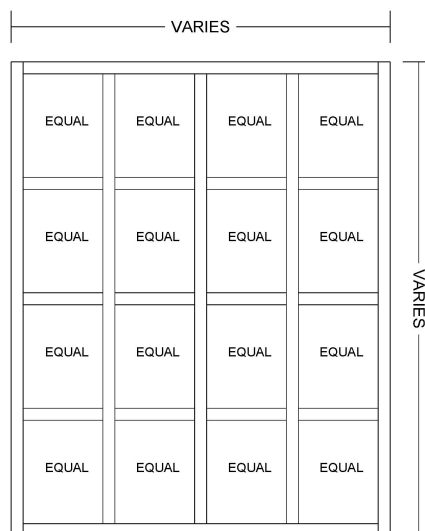
Accessory Options

See Accessory list which include Hardware, Components and Operations.

CUBBY 4 - 4



Open wall cabinet with
4 over 4 cubby holes



TYPICAL: WOPEN-4X4-L

Laminate cabinets are available in a wide range of standard features and options. Additionally, custom configurations are possible. The website supports many of the features needed to quote and order commercial grade laminate or melamine products. The best value is made available by selecting from the standard features listed below (Default settings in the configurator)

Standard door

None

Standard Sizes

Width ranges 24" to 39"
Height ranges 24" to 42"
Depth ranges 9" to 30"

Standard features

Unfinished Sides - 3/4" HPL Interior, white liner exterior
Finished Sides - 3/4" HPL exterior, HPL interior
Finished bottom - 3/4" HPL exterior, HPL interior
Unfinished top - 3/4" HPL Interior, white liner exterior
Unfinished back - 1/2" HPL interior, white liner exterior
Finished fixed shelves - 3/4" HPL 2 sides
Finished fixed dividers - 3/4" HPL 2 sides
Drawer Front - None
Cabinet edgeband - .018 PVC
Drawer edgeband - .None

Standard Hardware

Hinges - None
Pull - None
Shelf Clips - None

Standard Options

Finished ends - 3/4" HPL exterior, 3/4" HPL exterior

Custom Options

Finished Interiors - Finished Interiors are standard because of the exposed open area. Please unselect FI if white melamine is desired

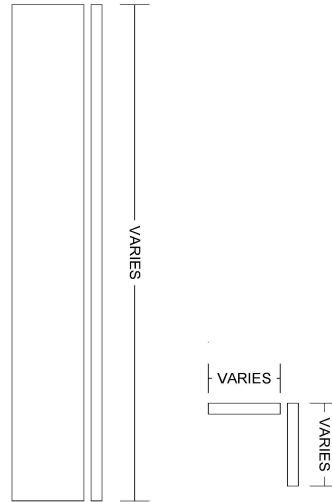
Accessory Options

See Accessory list which include Hardware, Components and Operations.

C-FILLER



Corner filler, edged on one short edge with .018 PVC



TYPICAL: C-FILLER

Laminate cabinets are available in a wide range of standard features and options. Additionally, custom configurations are possible. The website supports many of the features needed to quote and order commercial grade laminate or melamine products. The best value is made available by selecting from the standard features listed below (Default settings in the configurator)

Standard Sizes

Width ranges 3" to 24"
Height ranges 12" to 96"

Standard features-

Core - ¾" HPL one side, balanced backer
Edge - .018 PVC on one short edge

FILLER



Filler, edged on one short
edge with .018 PVC



TYPICAL: FILLER

Laminate cabinets are available in a wide range of standard features and options. Additionally, custom configurations are possible. The website supports many of the features needed to quote and order commercial grade laminate or melamine products. The best value is made available by selecting from the standard features listed below (Default settings in the configurator)

Standard Sizes

Width ranges 3" to 36"
Height ranges 12" to 96"

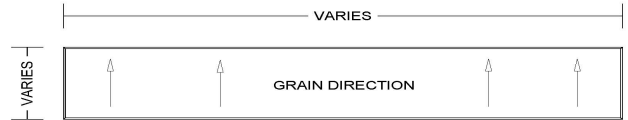
Standard features-

Core - ¾" HPL one side, balanced backer
Edge - .018 PVC on one short edge

FALSE FRONT



False Front, edging on all edges



TYPICAL: FALSE FRONT

Laminate cabinets are available in a wide range of standard features and options. Additionally, custom configurations are possible. The website supports many of the features needed to quote and order commercial grade laminate or melamine products. The best value is made available by selecting from the standard features listed below (Default settings in the configurator)

Standard Sizes

Width ranges 3" to 36"
Height ranges 12" to 96"

Standard features-

Core - 3/4" HPL one side, balanced backer
Edge - all edges with .018 PVC or 3mm PVC

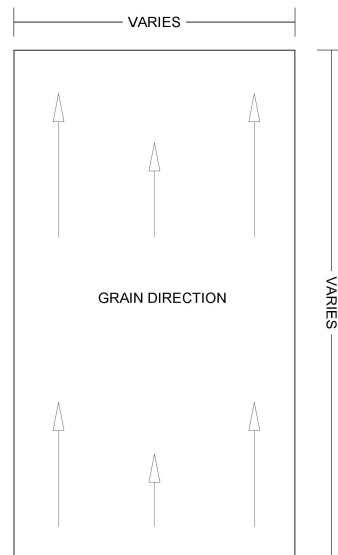
Options -

Laminate both sides (Determined by door finish selection)
Self edge (Laminate edges, determined by door edge selection)

Panel



Panel, edging on all edges



TYPICAL: PANEL

Laminate cabinets are available in a wide range of standard features and options. Additionally, custom configurations are possible. The website supports many of the features needed to quote and order commercial grade laminate or melamine products. The best value is made available by selecting from the standard features listed below (Default settings in the configurator)

Standard Sizes

Width ranges 3" to 36"
Height ranges 12" to 96"

Standard features-

Core - 3/4" HPL two sides
Edge - all edges with .018 PVC or 3mm PVC (Determined by the door edge selection)

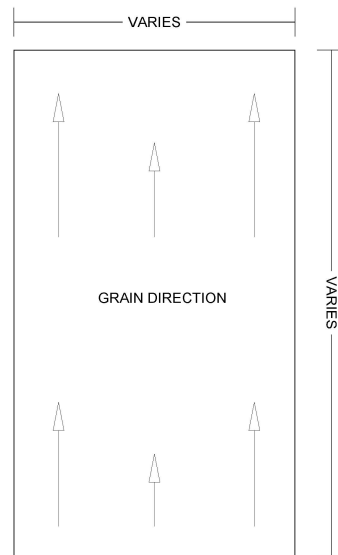
Options -

Self edge (Laminate edges, determined by door edge selection)

MEL



**Melamine panel, edging on
all edges**



TYPICAL: MEL

Laminate cabinets are available in a wide range of standard features and options. Additionally, custom configurations are possible . The website supports many of the features needed to quote and order commercial grade laminate or melamine products The best value is made available by selecting from the standard features listed below (Default settings in the configurator)

Standard Sizes

Width ranges 3" to 36"
Height ranges 12" to 96"

Standard features-

Core - ¾" white melamine two sides
Edge - all edges with .018 PVC or 3mm PVC (Determined by the door edge selection)

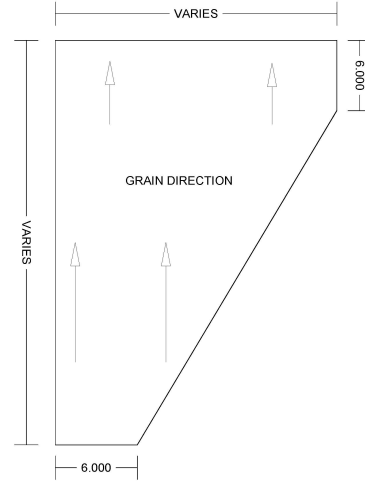
Options -

Self edge (Laminate edges, determined by door edge selection)

Support



Support, edging on front edge



TYPICAL: SUPPORT-SHP

Laminate cabinets are available in a wide range of standard features and options. Additionally, custom configurations are possible. The website supports many of the features needed to quote and order commercial grade laminate or melamine products. The best value is made available by selecting from the standard features listed below (Default settings in the configurator)

Standard Sizes

Width ranges 12" to 36"
Height ranges 12" to 42"

Standard features-

Core - ¾" HPL two sides
Edge - front edge with .018 PVC or 3mm PVC (Determined by the cabinet edge selection)

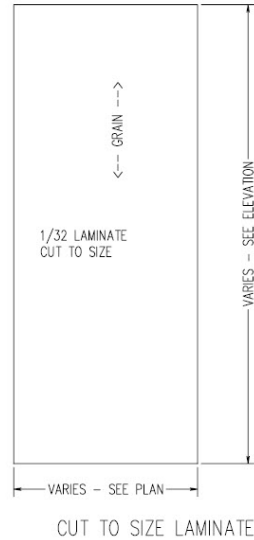
Options -

Self edge (Laminate edges, determined by cabinet edge selection)

Laminate



Cut to size laminate sheets



Laminate cabinets are available in a wide range of standard features and options. Additionally, custom configurations are possible. The website supports many of the features needed to quote and order commercial grade laminate or melamine products. The best value is made available by selecting from the standard features listed below (Default settings in the configurator)

Standard Sizes

Width ranges 12" to 36"
Height ranges 12" to 96"

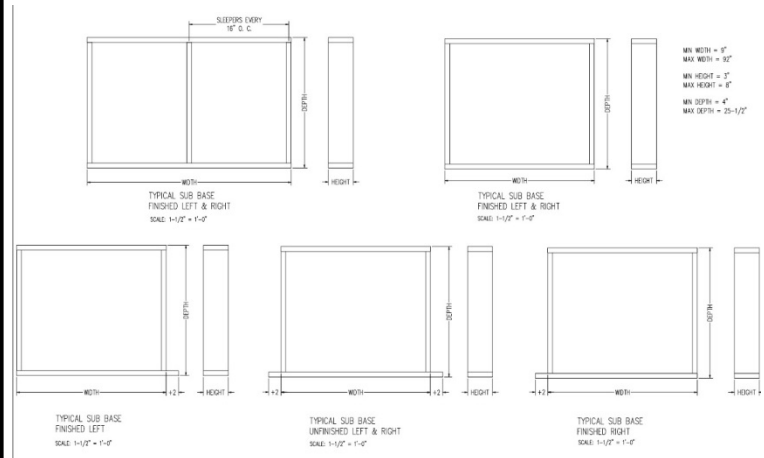
Standard features-

Laminate (Determined by room selection)

SUB BASE



Plywood sub base



Laminate cabinets are available in a wide range of standard features and options. Additionally, custom configurations are possible. The website supports many of the features needed to quote and order commercial grade laminate or melamine products. The best value is made available by selecting from the standard features listed below (Default settings in the configurator)

Standard Sizes

Width ranges 12" to 36"
Length ranges 12" to 96"
Height ranges 3" to 12"

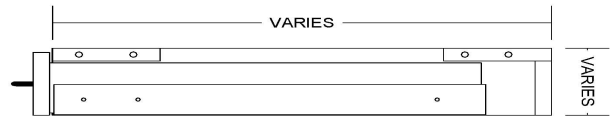
Standard features-

Core - 3/4" unfinished veneer core plywood
Unfinished ends - 2" extended ear for field fit
Finished ends - Flush end determined by finished end selection

PENCILDRW



Pencil drawer for knee space applications



TYPICAL: PENCILDRW-M

Laminate cabinets are available in a wide range of standard features and options. Additionally, custom configurations are possible. The website supports many of the features needed to quote and order commercial grade laminate or melamine products. The best value is made available by selecting from the standard features listed below (Default settings in the configurator)

Standard door

None

Standard Sizes

Width ranges 9" to 39"
Height ranges 6" to 12"
Depth ranges 10" to 30"

Standard features

Unfinished Sides - ¾" white melamine
Finished Sides - ¾" HPL exterior, white liner interior
Finished bottom - ¾" HPL exterior, white liner interior
Unfinished top stretchers - ¾" white melamine
Unfinished back - ½" white melamine (Dado in sides)
Drawer front - ¾" HPL exterior, white liner interior
Cabinet edgeband - .018 PVC
Drawer front edgeband - .018 PVC or 3mm PVC
Drawer Box - ½" white melamine

Standard Hardware

Drawer Slide - FR5000 Fuller full extension ball bearing (100 lb.)
Pull - 4" satin chrome wire pull

Standard Options

Finished ends - ¾" HPL exterior, white liner interior

Custom Options

Locks - Choice of lock and key options
Finished Interiors - ¾" HPL interiors with either white liner exterior or matching HPL exteriors, determined by finished end selection.

Accessory Options

See Accessory list which include Hardware, Components and Operations.

CABINET FAN



Cabinet fan, includes cord and grille



Northway hardware accessories can be added to the cabinet selection. The price includes the hardware cost, machining and installation. Customer supplied drawings will indicate the location and conditions related to each piece of hardware.

Standard Sizes

4" x 4" x 2" (Nominal size)

Accessory > Hardware > Cabinet Fan



120V (50/60 Hz) nominal fan rated 2.7 m³/min.
39 dBA
Smooth running, long life bearings

VENT GROMMET



Air vent grommet, 4" diameter



Northway hardware accessories can be added to the cabinet selection. The price includes the hardware cost, machining and installation. Customer supplied drawings will indicate the location and conditions related to each piece of hardware.

Standard Sizes

4 ½" Overall diameter, ¾" deep

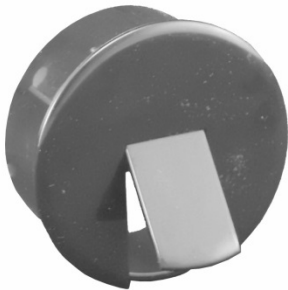
Accessory > Hardware > Vent Grommet Black



Air vent grommet cap and liner. Fits into a 4" hole.

Color - Black

GROMMET



Grommet, 3" diameter



Northway hardware accessories can be added to the cabinet selection. The price includes the hardware cost, machining and installation. Customer supplied drawings will indicate the location and conditions related to each piece of hardware.

Accessory > Hardware > Grommet



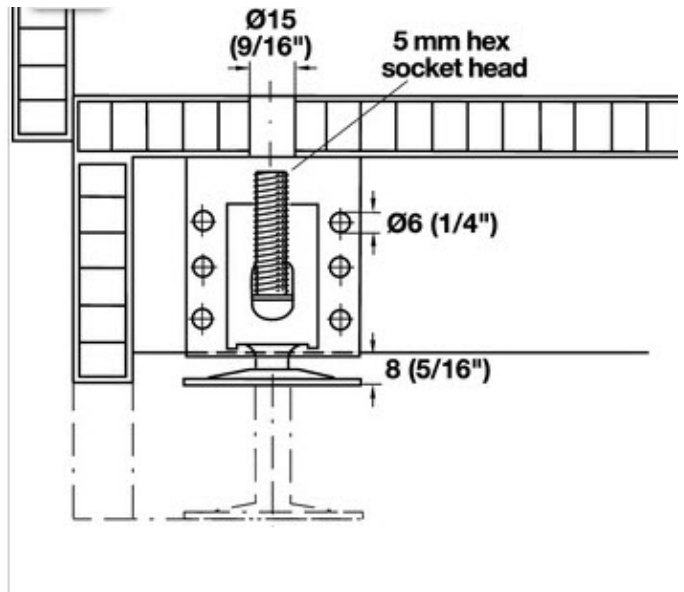
ABS grommet, retractable/self storing
Slot cover. When closed, the cover is flat.
When open the slot allows access to for
Cables and can be removed for larger retrieval.

Color is Black
Diameter - 3"

CABINET LEVELERS



Adjustable height cabinet levelers,
sold in sets of four



Northway hardware accessories can be added to the cabinet selection. The price includes the hardware cost, machining and installation. Customer supplied drawings will indicate the location and conditions related to each piece of hardware.

Accessory > Hardware > Cabinet Levelers



Adjustable height leveler with supporting bracket

Minimum height is 2 $\frac{3}{4}$ ".
Maximum height is 4 $\frac{1}{2}$ "

Material - Steel
Load bearing capacity - 440 lbs.

HEAVY DUTY CASTERS



Set of four casters, 2 locking, 2
free swing



Northway hardware accessories can be added to the cabinet selection. The price includes the hardware cost, machining and installation. Customer supplied drawings will indicate the location and conditions related to each piece of hardware.

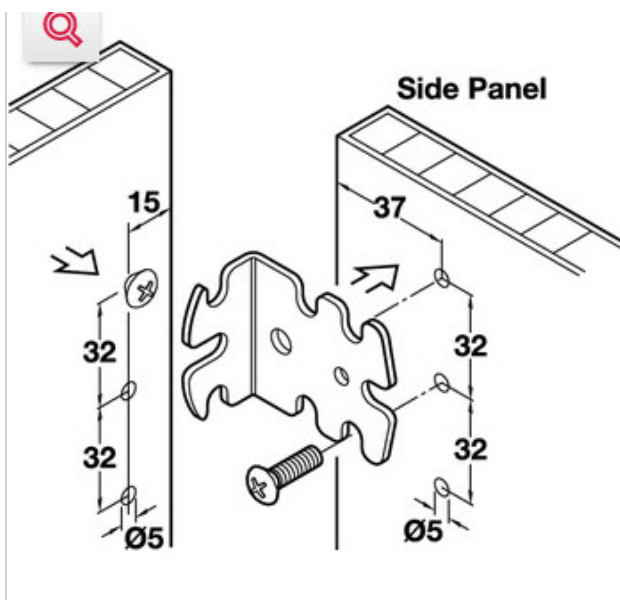
Accessory > Hardware > Set of 4 Heavy Duty Casters

Mounting Options	Top Plate Swivel	
Stem/Plate Size	3 3/4" x 2 5/8"	
Expanding Adapter Stem	N/A	
Wheel Dia.	3	INCH
Tread Type	TPR	
Wheel Bearing	Precision	
Thread Guard	Full	
Caster Brake	Without Brake	With Tread Lock Brak
Part Number	PGS30120ZN-TPR33(GG)	
Tread Width	1 1/4	INCH
Finish	Zinc	
Dynamic Load	210	Pounds
Mounting Height	4 1/4	INCH
Swivel Rad.	2 7/8	INCH

UNIVERSAL BRACKET



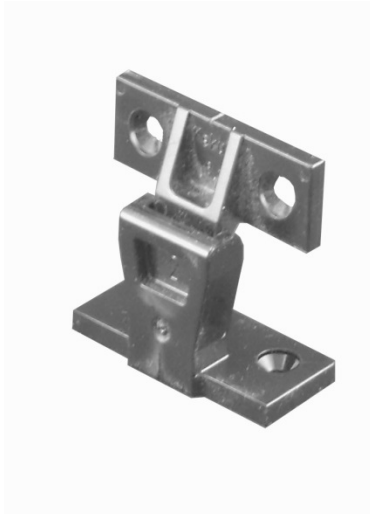
Satin chrome universal mounting bracket



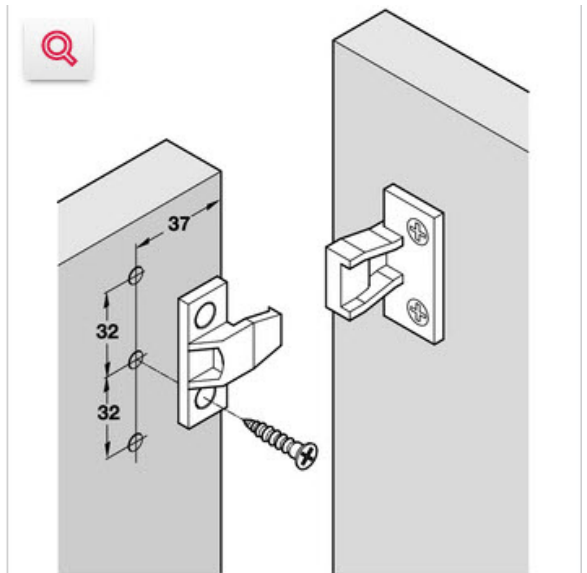
Northway hardware accessories can be added to the cabinet selection. The price includes the hardware cost, machining and installation. Customer supplied drawings will indicate the location and conditions related to each piece of hardware.

Accessory > Hardware > Universal Bracket

KEKU CLIP



Removable panel clip



Northway hardware accessories can be added to the cabinet selection. The price includes the hardware cost, machining and installation. Customer supplied drawings will indicate the location and conditions related to each piece of hardware.

Accessory > Hardware > Keku Clip

GANG LOCK



Gang locking system for
drawer stacks



Northway hardware accessories can be added to the cabinet selection. The price includes the hardware cost, machining and installation. Customer supplied drawings will indicate the location and conditions related to each piece of hardware.

Accessory > Hardware > Gang Lock

PANEL LEVELER

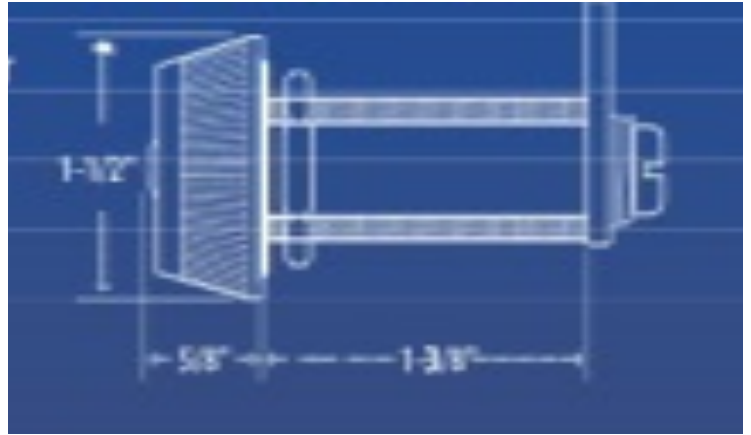


Panel leveler, sold in pairs

Northway hardware accessories can be added to the cabinet selection. The price includes the hardware cost, machining and installation. Customer supplied drawings will indicate the location and conditions related to each piece of hardware.

Accessory > Hardware > Panel Leveler

COMBINATION LOCK



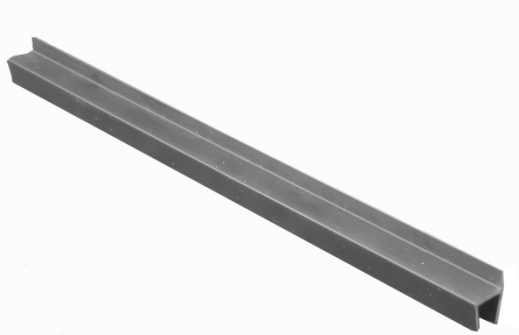
Combination door and drawer lock

Northway hardware accessories can be added to the cabinet selection. The price includes the hardware cost, machining and installation. Customer supplied drawings will indicate the location and conditions related to each piece of hardware.

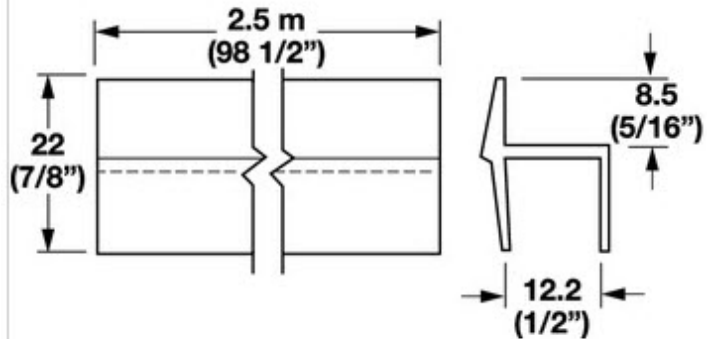
Accessory > Hardware > Combination Lock

Installs in typical $\frac{3}{4}$ " cam lock configuration.
Assorted cams are available for most applications.
Combinations can be set or changed easily. Up to
10,000 possible combinations.

HANGING FILE RAILS



Black plastic clip on file rails
for ½" drawer boxes



Northway hardware accessories can be added to the cabinet selection. The price includes the hardware cost, machining and installation. Customer supplied drawings will indicate the location and conditions related to each piece of hardware.

Accessory > Hardware > Hanging File Rails



Black plastic clip on file rail. Snaps
Onto ½" drawer sides, requiring no
Glue or nails

DOUBLE COAT HOOK



Satin Chrome double coat hook

Northway hardware accessories can be added to the cabinet selection. The price includes the hardware cost, machining and installation. Customer supplied drawings will indicate the location and conditions related to each piece of hardware.

Accessory > Hardware > Double Coat Hook

Steel, satin chrome finish.

2 9/16" long, 1 7/16" from front of mounting area to inside of the top "J".
13/32" wide, 1 17/32" long, 1/16" thick. 2 mounting holes, 3/4" o.c.

Ideal for mounting to the underside of locker shelves or other shelf applications.

DOUBLE WALL HOOK



Satin Chrome double wall
mount hook

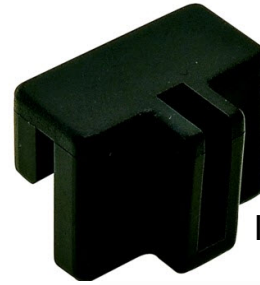
Northway hardware accessories can be added to the cabinet selection. The price includes the hardware cost, machining and installation. Customer supplied drawings will indicate the location and conditions related to each piece of hardware.

Accessory > Hardware > Double Wall Hook

LATERAL FILE RAIL



Hanging file rail system for
lateral files, sold in sets
per drawer



Intermediate rail clip



Side mounting clip



File rail

Northway hardware accessories can be added to the cabinet selection. The price includes the hardware cost, machining and installation. Customer supplied drawings will indicate the location and conditions related to each piece of hardware.

Accessory > Hardware > Lateral File Rail

16 Gauge aluminum bar stock clips into side mounts screw to drawer sides. Intermediate clips and rails make up the lateral file configuration.

Sold in sets per drawer.

CLOSET ROD AND FLANGE



Closet rod and flanges, sold in sets
per lineal foot



Northway hardware accessories can be added to the cabinet selection. The price includes the hardware cost, machining and installation. Customer supplied drawings will indicate the location and conditions related to each piece of hardware.

Accessory > Hardware > Closet Rod and Flange

Flanges

Screw mount, 1 1/16" diameter, 3 5/16" x 4 5/16" Closed on one end, open on one end. Steel, chrome finish to be used with 1" closet rod.

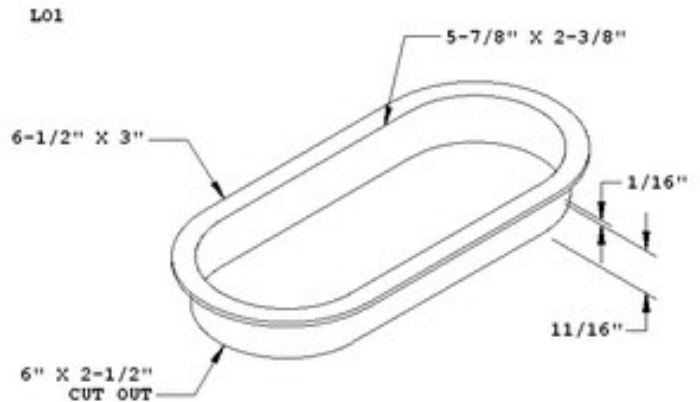
Rod

1" diameter steel, chrome finish closet rod, 16 gauge. Intended applications are clothes hanging of shirts, dresses, jackets and other apparel.

GLOVE GROMMET



Glove grommet flange, black



Northway hardware accessories can be added to the cabinet selection. The price includes the hardware cost, machining and installation. Customer supplied drawings will indicate the location and conditions related to each piece of hardware.

Accessory > Hardware > Glove Grommet

Plastic grommet liner with a 6" x 2 ½" oval slot for access to plastic glove dispensers.
Color is black.
Press in fit.

KEYBOARD TRAY



Pull out keyboard tray and
mouse pad

Northway hardware accessories can be added to the cabinet selection. The price includes the hardware cost, machining and installation. Customer supplied drawings will indicate the location and conditions related to each piece of hardware.

Accessory > Hardware > Keyboard Tray

Cushioned palm rest
Adjustable height mounting features
Steel tray
18" ball bearing slides
Swivel style mouse surface
Fits a 23" or wider knee space
Mouse surface mounts to either side
Black finish

POWER STRIP



8 position power strip /
surge protector

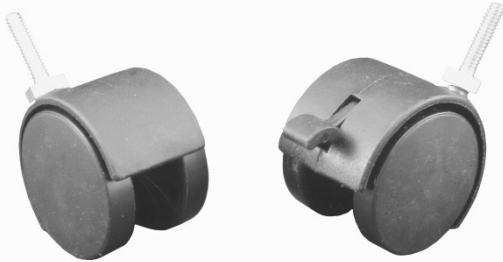
Northway hardware accessories can be added to the cabinet selection. The price includes the hardware cost, machining and installation. Customer supplied drawings will indicate the location and conditions related to each piece of hardware.

Accessory > Hardware > Power Strip

Good for office and home applications. Includes 4 outlets spaced for transformers.
Right angle plug and 8 total outlets and 3990 Joules of surge protections.

White, with 6' long cord.

TWIN WHEEL CASTERS



Set of 4, twin wheel casters,
2 locking, 2 free swing

Specifications

Caster Type	Nylon Hooded Twin Wheel Caster
Wheel Diameter	50 mm
Top Fitting	3/8"-16 x 1" Threaded Stem

Standard Features

- 100% Nylon Body Construction
- Black Color
- Variety of Fastenings
- Load Capacity from 60-100 lbs

Northway hardware accessories can be added to the cabinet selection. The price includes the hardware cost, machining and installation. Customer supplied drawings will indicate the location and conditions related to each piece of hardware.

Accessory > Hardware > Set of 4 Twin Wheel Casters

SINGLE COAT HOOK



Satin chrome coat hook,
wall mount

Northway hardware accessories can be added to the cabinet selection. The price includes the hardware cost, machining and installation. Customer supplied drawings will indicate the location and conditions related to each piece of hardware.

Accessory > Hardware > Single Coat Hook

Over length 2 11/16". 3/16" diameter hook. Mounting holes 3/4" o.c., 3 total holes.

TRASH CAN



White plastic trash can,
15 Qt.

Northway hardware accessories can be added to the cabinet selection. The price includes the hardware cost, machining and installation. Customer supplied drawings will indicate the location and conditions related to each piece of hardware.

Accessory > Hardware > Trash Can

TAB PULL



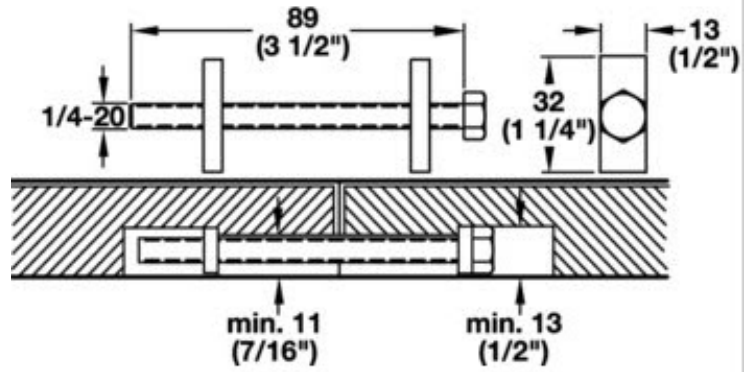
Satin chrome tab pull

Northway hardware accessories can be added to the cabinet selection. The price includes the hardware cost, machining and installation. Customer supplied drawings will indicate the location and conditions related to each piece of hardware.

TIGHT JOINT FASTENER



Steel tight joint fastener
for field joint installations



Northway hardware accessories can be added to the cabinet selection. The price includes the hardware cost, machining and installation. Customer supplied drawings will indicate the location and conditions related to each piece of hardware.

Accessory > Hardware > Tight Joint Fastener

Product details

- Easily installed and quickly assembled for material from 16 mm (5/8")
- Provides even pressure between the surface joint pieces without glue

Material Steel

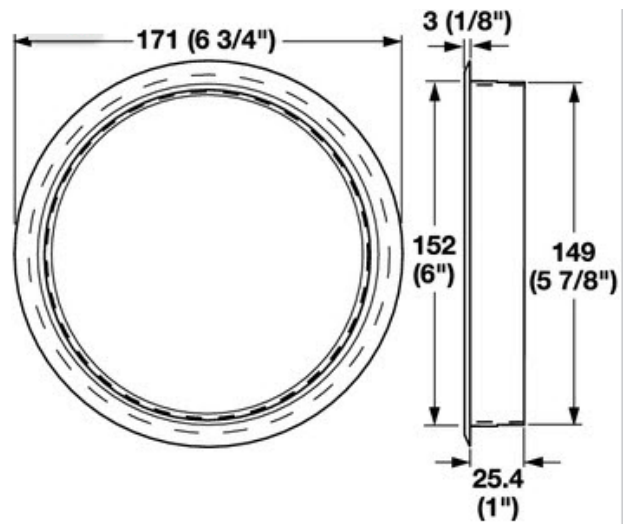
Length 89 mm

The joint can be disassembled if necessary

TRASH GROMMET



Trash grommet, black press in
6" diameter



Northway hardware accessories can be added to the cabinet selection. The price includes the hardware cost, machining and installation. Customer supplied drawings will indicate the location and conditions related to each piece of hardware.

Accessory > Hardware > Trash Grommet

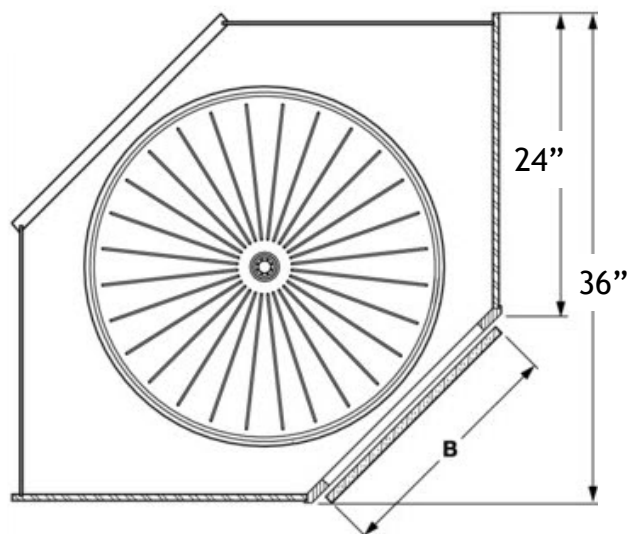
Product details

Material	Plastic
Mounting	For press fitting
Drill hole diameter	152

LAZY SUSAN



Trash grommet, black press in
6" diameter



Northway hardware accessories can be added to the cabinet selection. The price includes the hardware cost, machining and installation. Customer supplied drawings will indicate the location and conditions related to each piece of hardware.

Accessory > Hardware > Lazy Susan

Suitable for Hinged door applications

- Tested to 100,000 cycles
- Made in USA
- Telescopic post adjusts without tools
- Anti-slip ribs for sliding resistance
- Trays are safely secured with a steel pin through the post
- Rigid double

For inside cabinet height 34 - 42"

Diameter 18 "

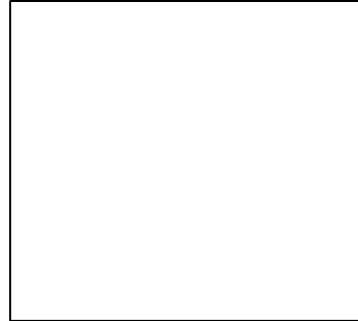
Load bearing capacity Per tray: (28 lbs) 12.5 kg

Material Polypropylene

MACHINED CUT OUT



Machined cut out, priced by
square inch



Northway hardware accessories can be added to the cabinet selection. The price includes the hardware cost, machining and installation. Customer supplied drawings will indicate the location and conditions related to each piece of hardware.

Accessory > Operation > Machined Cut Out

You may select a machined cut out from the accessory list Sub category “Operation”. Cut out priced by the square inch and edges are painted black. Unfinished edges available at customer request. Inside corners of cut outs have a ¼” radius. Square inside corners are not available through this program.

Slots must be at least ½” wide. Please indicate the location of The cut out at the time of order.